

2026 Statistical Report for Eastern PA Conference of the UMC

The 2026 Statistical Report conveys summarized data for the EPA Conference for the years of 2023 to 2025 as well as visualizations of key attendance/involvement trends for the years between 2012 and 2025.

Overview of Attendance/Involvement Trends

The post-COVID trend in in-person church attendance, small/formation group involvement, and missions involvement has been a gradual but steady decline. However, this decline is substantially slower than pre-COVID, which culminated in an approximately 30% drop during the shutdown years. Sunday school attendance has dropped most precipitously over the past decade, but the decrease of 2.5% from 2024 to 2025 is the smallest since 2017. Overall, since 2012, in-person church attendance, small/formation group involvement, and Sunday School attendance have dropped by approximately 54%, 52%, and 64%, respectively (as of 2024, the decreases since 2012 were 53%, 51%, and 65%). The number of individuals participating in missions has increased by 41% since 2013 when this was first tracked (as of 2024, the increase was 46%). Figure 1 below displays the long-term trends in these categories.

Figure 1

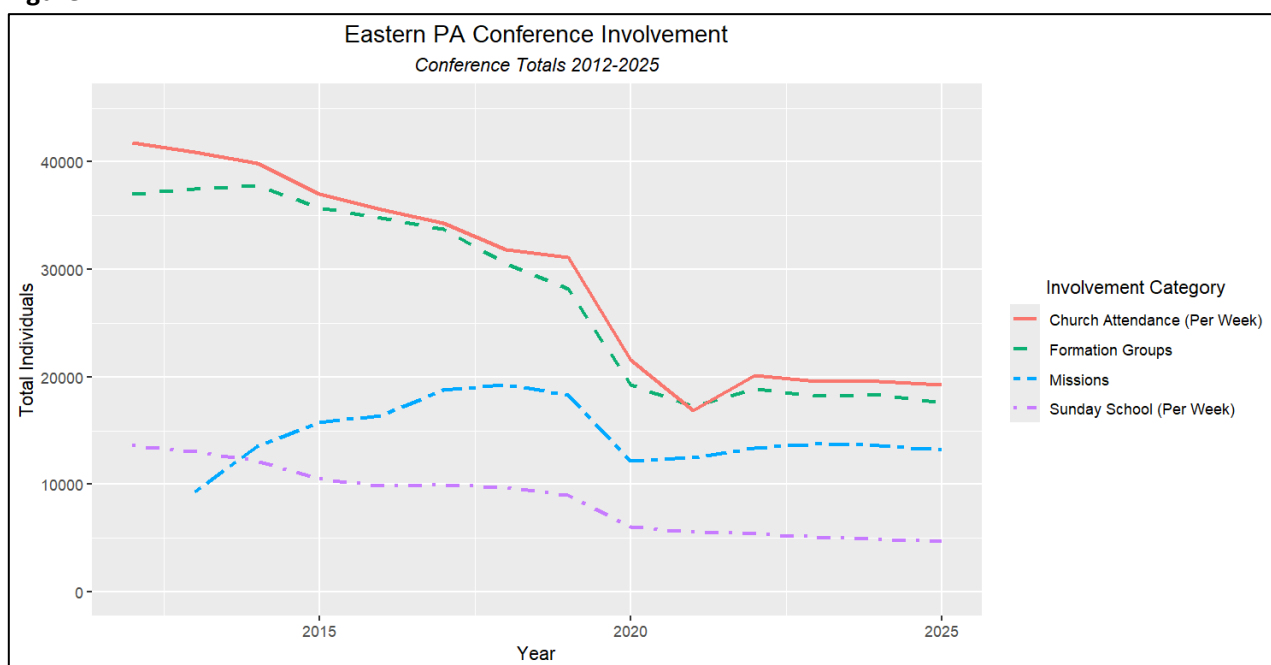


Figure 1 displays in-person church attendance, small/formation group involvement, participation in missions, and Sunday School attendance from 2012 to 2025.

Considerations for Online Attendance

Online attendance remains higher post-pandemic than pre-pandemic but reporting strategies are quite irregular across congregations in the conference. For example, in a few congregations, online attendance is reported to be over 10 times in-person attendance, which seems unlikely. **A common recommendation for estimating online attendance is to take the maximum number of screens tuned in to the service and**

multiply by 1.7. If a church uses a significantly higher multiplier or if they use an inaccurate measurement such as “Facebook” views, the number can be greatly overestimated. Figure 2 below displays estimated church attendance including both in-person and online attendees based on two rudimentary estimation strategies:

- Strategy 1 (conservative): online attendance is capped at 25% of in-person attendance;
- Strategy 2 (less conservative): online attendance is capped at 50% of in-person attendance.

Using Strategy 1 and 2, church attendance in the EPA conference is estimated to have decreased by 45% and 40% since 2012, respectively, and 22% and 19% since 2019.

Figure 2

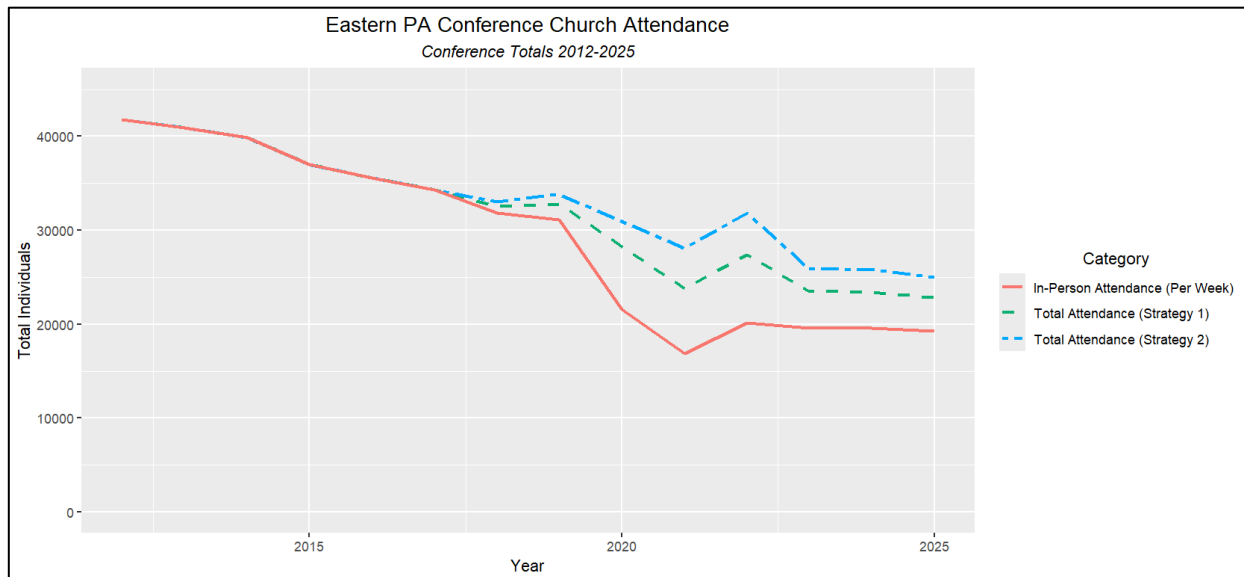
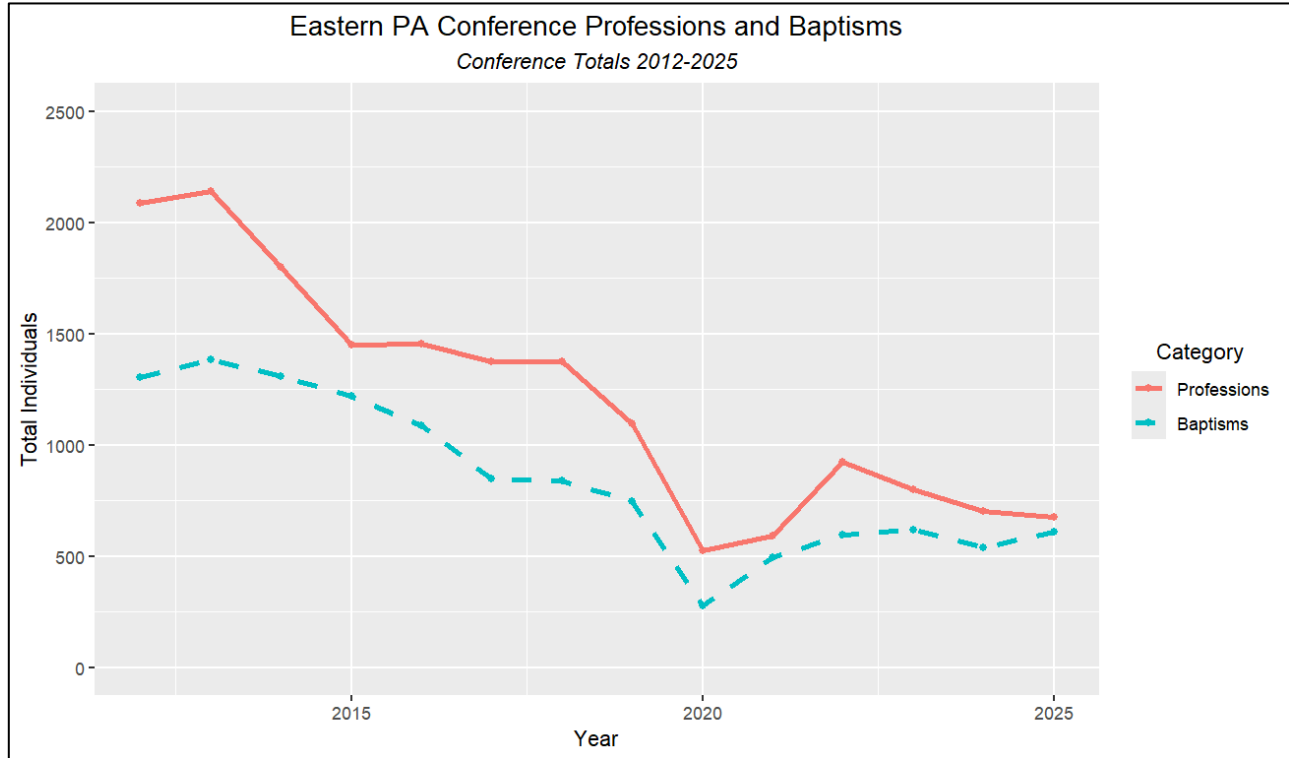


Figure 3 show the trends of in-person attendance since 2012 (solid red line) as well as the estimated trends of overall attendance including online viewers (dashed lines).

Confirmations and Baptisms

Two significant positives emerged in this year’s data: the number of baptisms increased about 13% between 2024 and 2025 and the number of professions of faith via confirmation increased by about 8% (though overall professions of faith decreased). Figure 3 below displays total professions of faith (either through confirmation or otherwise) and total baptisms for the years 2012-2025. While professions and baptisms have rebounded slightly since the pandemic, the 2025 totals are still 68% and 53% lower than in 2012, respectively.

Figure 3



2023-2025 Statistical Comparisons

In the tables below, total conference numbers are compared for 2023 through 2025 for a variety of important statistical categories. The totals highlighted in the visualizations above are bolded/italicized. The % changes between 2023 and 2024 and between 2024 and 2025 are both given in order to make it easier to compare whether the “trajectory” has gotten worse or better. Some numbers for 2024 have changed from last year’s report due to updated data.

| Membership Totals and % Changes | | | | | |
|---|-------------|-------------|-------------|------------------------------|------------------------------|
| Statistical Category | 2023 | 2024 | 2025 | % Change 2023 to 2024 | % Change 2024 to 2025 |
| Total Number of Congregations* | 377 | 372 | 369 | -1.0% | -0.8% |
| Total professing members at end of year | 71,548 | 69,016 | 64,944 | -3.5% | -5.9% |
| Received by Profession of Faith through confirmation | 321 | 214 | 231 | -33.3% | 7.9% |
| Received by Profession of Faith other than confirmation | 478 | 490 | 444 | 2.5% | -9.4% |
| Total received by Profession of Faith | 799 | 704 | 675 | -11.9% | -4.1% |
| Membership restored by Affirmation of Faith | 82 | 101 | 79 | 23.2% | -21.8% |

| | | | | | |
|--|------|------|------|--------|--------|
| Received from other United Methodist Churches | 284 | 293 | 201 | 3.2% | -31.4% |
| Received from other denominations | 232 | 202 | 217 | -12.9% | 7.4% |
| Received from closed United Methodist Churches | 66 | 24 | 104 | -63.6% | 333.3% |
| Removed or corrected by Charge Conference action | 1736 | 1036 | 2033 | -40.3% | 96.3% |
| Withdrawn from Professing Membership | 497 | 606 | 420 | 21.9% | -30.7% |
| Removed by transfer to other UMC Churches | 643 | 249 | 127 | -61.3% | -49.0% |
| Removed by transfer to other denominations | 235 | 134 | 173 | -43.0% | 29.1% |
| Removed by death | 986 | 959 | 899 | -2.7% | -6.3% |

*Numbers for this category are approximate and include churches open part of the year listed.

| Membership Totals by Race | | | | | |
|----------------------------------|-------------|-------------|-------------|------------------------------|------------------------------|
| Statistical Category | 2023 | 2024 | 2025 | % Change 2023 to 2024 | % Change 2024 to 2025 |
| Asian | 559 | 550 | 544 | -1.6% | -1.1% |
| African American/Black | 3834 | 3532 | 3472 | -7.9% | -1.7% |
| Hispanic | 1005 | 1004 | 941 | -0.1% | -6.3% |
| Native American | 39 | 55 | 52 | 41.0% | -5.5% |
| Pacific Islander | 56 | 74 | 75 | 32.1% | 1.4% |
| White | 64,281 | 61,768 | 57,075 | -3.9% | -7.6% |
| Multi-Racial | 1984 | 2033 | 1248* | 2.5% | -38.6% |

*The large decrease in "Multi-racial" is due to a single church.

| Attendance, Baptism, Involvement, and Other Vitality Indicators | | | | | |
|--|---------------|---------------|---------------|------------------------------|------------------------------|
| Statistical Category | 2023 | 2024 | 2025 | % Change 2023 to 2024 | % Change 2024 to 2025 |
| Average in-person weekly worship attendance | 19,595 | 19,590 | 19,254 | -0.0% | -1.7% |
| Number of churches with average weekly in-person attendance in the following ranges: | | | | | |
| 0 - 49 | 251 | 245 | 246 | -2.4% | 0.4% |
| 50 - 99 | 84 | 88 | 86 | 4.8% | -2.3% |
| 100 - 149 | 17 | 15 | 13 | -11.8% | -13.3% |
| 150 - 199 | 12 | 12 | 12 | 0% | 0% |
| 200 - 299 | 8 | 8 | 8 | 0% | 0% |
| 300 - 399 | 5 | 3 | 4 | -40.0% | 33.3% |
| 400+ | 0 | 1 | 0 | - | -100.0% |
| Average online weekly worship attendance* | 13,404 | 13,152 | 12,240 | -1.9% | -6.9% |
| Number of persons baptized: Ages 0-12 | 446 | 367 | 391 | -17.7% | 6.5% |

| | | | | | |
|--|---------------|---------------|---------------|---------------|--------------|
| Number of persons baptized: Ages 13+ | 175 | 173 | 218 | -1.1% | 26.0% |
| Total number of persons baptized | 621 | 540 | 609 | -13.0% | 12.8% |
| Total baptized members who have not become professing members | 5062 | 4598 | 3967 | -9.2% | -13.7% |
| Number of persons on constituency roll (¶230.3) | 13,574 | 13,117 | 9947 | -3.4% | -24.2% |
| Number of <u>children</u> in Christian formation groups & other small group ministries (ages 0-11) | 3483 | 3380 | 3187 | -3.0% | -5.7% |
| Number of <u>youth</u> in Christian formation groups & other small group ministries (ages 12-18) | 2009 | 2099 | 2080 | 4.5% | -0.9% |
| Number of <u>young adults</u> in Christian formation groups & other small group ministries (ages 19-30) | 1271 | 1113 | 1183 | -12.4% | 6.3% |
| Number of <u>other adults</u> in all Christian formation groups & other small group ministries (ages 31+) | 11,433 | 11,708 | 11,176 | 2.4% | -4.5% |
| Total number of persons participating in Christian formation groups | 18,196 | 18,300 | 17,626 | 0.6% | -3.7% |
| Total enrolled in confirmation classes this year | 337 | 337 | 348 | 0% | 3.3% |
| Average attendance in Sunday church school (all ages) | 5074 | 4843 | 4721 | -4.6% | -2.5% |
| Number of participants in Vacation Bible School | 5281 | 5281 | 5473 | 0% | 3.6% |
| Number of ongoing Sunday School classes/groups | 721 | 699 | 709 | -3.1% | 1.4% |
| Number of ongoing classes/groups other than Sunday School | 1595 | 1669 | 1679 | 4.6% | 0.6% |
| Number of short-term classes and groups (all ages) | 688 | 720 | 704 | 4.7% | -2.2% |
| Membership in United Methodist Men | 794 | 689 | 756 | -13.2% | 9.7% |
| United Methodist Men amount spent for local church and community projects, or other projects (in dollars) | 44,662 | 43,275 | 53,912 | -3.1% | 24.6% |
| Membership in United Women in Faith | 2386 | 2148 | 1971 | -10.0% | -8.2% |
| United Women in Faith amount spent for local church and community projects, or other projects (in dollars) | 467,417 | 197,408 | 232,599 | -57.8% | 17.8% |
| Number of UMVIM teams sent | 23 | 19 | 22 | -17.4% | 15.8% |

| | | | | | |
|--|---------------|---------------|---------------|--------------|--------------|
| Number of church members participating in any UMVIM team | 93 | 110 | 125 | 18.3% | 13.6% |
| Total number of community ministries for outreach, justice, and mercy offered | 1899 | 2066 | 2071 | 8.8% | 0.2% |
| Of the community ministries, how many focus on global/regional health? | 557 | 594 | 599 | 6.6% | 0.8% |
| Of the community ministries, how many focus on engaging in ministry with the poor/socially marginalized? | 1304 | 1356 | 1376 | 4.0% | 1.5% |
| Number of persons from your congregation engaged in mission/community ministries | 13,805 | 13,606 | 13,240 | -1.4% | -2.7% |
| Number of persons served by community ministries for outreach, justice, and mercy | 487,308 | 463,776 | 455,705 | -4.8% | -1.7% |

*Online attendance records are not reported consistently across churches, and these numbers are likely *too high*.

| Church Value and Indebtedness (in dollars) | | | | | |
|--|---------------|---------------|---------------|------------------------------|------------------------------|
| Statistical Category | 2023 | 2024 | 2025 | % Change 2023 to 2024 | % Change 2024 to 2025 |
| Market value of church-owned land, buildings, and equipment | 1,208,177,129 | 1,233,720,467 | 1,238,013,032 | 2.1% | 0.4% |
| Market value of other assets (cash, securities, other property, etc.) | 180,331,678 | 180,444,040 | 191,626,726 | 0.0% | 6.2% |
| Indebtedness secured by church property and assets, such as mortgages. | 17,820,901 | 16,751,596 | 11,177,264* | -6.0% | -33.3% |
| Other debt (current expenses, etc.) | 2,841,661 | 2,287,959 | 2,137,280 | -19.5% | -6.6% |

*May be inaccurate due to a data entry error

| Church Expenditures (in dollars), not including apportionments | | | | | |
|---|-------------|-------------|-------------|------------------------------|------------------------------|
| Statistical Category | 2023 | 2024 | 2025 | % Change 2023 to 2024 | % Change 2024 to 2025 |
| Total paid for direct-billed and/or non-apportioned clergy pension and other non-health benefits. | 675,209 | 378,001 | 279,736 | -44.0% | -26.0% |
| Total paid for direct-billed and/or non-apportioned clergy health benefits. | 619,316 | 411,029 | 370,757 | -33.6% | -9.8% |

| | | | | | |
|--|------------|------------|------------|--------|--------|
| Base compensation paid to/for the primary Pastor or other person assigned or appointed in the lead pastoral role to the church | 11,974,990 | 11,860,204 | 11,846,520 | -1.0% | -0.1% |
| Base compensation paid to/for all Associate Pastor(s) and other pastoral staff assigned or appointed to the church | 964,883 | 905,870 | 786,870 | -6.1% | -13.1% |
| Base compensation paid to/for any Deacons | 125,438 | 128,684 | 141,895 | 2.6% | 10.3% |
| Housing-related allowances and utilities paid to/for primary Pastor | 2,942,931 | 3,026,440 | 2,880,368 | 2.8% | -4.8% |
| Housing-related allowances/utilities paid to/for Associate Pastor(s) | 248,885 | 250,195 | 341,349 | 0.5% | 36.4% |
| Housing benefits paid to/for any Deacons | 57,941 | 50,500 | 51,060 | -12.8% | 1.1% |
| Total Accountable reimbursements paid | 511,043 | 548,711 | 515,004 | 7.4% | -6.1% |
| Total Other Cash Allowances paid to/for all pastor(s) | 86,060 | 115,486 | 132,925 | 34.2% | 15.1% |
| Total amount paid in salary and benefits for all other church staff and diaconal ministers | 16,270,007 | 15,496,008 | 15,871,173 | -4.8% | 2.4% |
| Total amount spent for local church program expenses | 3,483,079 | 3,838,642 | 3,753,953 | 10.2% | -2.2% |
| Total amount spent for other local church operating expenses | 18,811,492 | 19,355,362 | 20,138,711 | 2.9% | 4.1% |
| Total amount paid for principal and interest on indebtedness, loans, mortgages, etc. | 7,904,586 | 2,401,190 | 3,131,154 | -69.6% | 30.4% |
| Total amount paid on capital expenditures for building, improvements, and major equipment purchases | 7,485,971 | 7,256,140 | 10,294,770 | -3.1% | 41.9% |
| Total spent by local church on ALL expenditures | 83,978,762 | 80,089,381 | 75,936,065 | -4.6% | -5.2% |

| Church Giving & Income | | | | | |
|------------------------|------|------|------|-----------------------|-----------------------|
| Statistical Category | 2023 | 2024 | 2025 | % Change 2023 to 2024 | % Change 2024 to 2025 |

| | | | | | |
|--|------------|------------|------------|--------|--------|
| Number of households or individual persons giving to the local church | 25,477 | 24,766 | 23,061 | -2.8% | -6.9% |
| Amount received through pledges | 17,758,183 | 17,685,006 | 17,134,389 | -0.0% | -3.1% |
| Amount received from non-pledging but identified givers | 39,168,700 | 35,275,020 | 35,135,263 | -9.9% | -0.4% |
| Amount received from unidentified givers | 3,126,024 | 3,246,195 | 3,046,828 | 5.7% | -6.1% |
| Amount received from interest and dividends and/or transferred from liquid assets | 3,466,634 | 3,865,891 | 4,259,431 | 11.5% | 10.2% |
| Amount received from Sale of Church Assets | 1,099,218 | 364,000 | 2,480,366 | -66.9% | 581.4% |
| Amount received through building use fees, contributions, and rentals | 6,484,234 | 6,606,069 | 6,558,092 | 1.9% | -0.7% |
| Amount received through fundraisers and other sources | 3,071,341 | 2,735,968 | 2,947,926 | -10.9% | 7.8% |
| Total income for annual budget/spending plan | 74,174,334 | 69,778,149 | 71,562,295 | -5.9% | 2.6% |
| Amount received from Capital campaigns | 2,210,043 | 5,814,111 | 2,858,526 | 163.1% | -50.8% |
| Amount received from Memorials, endowments, and bequests | 2,765,695 | 2,839,378 | 2,501,968 | 2.7% | -11.9% |
| Amount received from other sources and projects, including sale of buildings | 1,943,731 | 3,809,390 | 5,820,728 | 96.0% | 52.8% |
| Amount received for Special Sundays, General Advance Specials, World Service Specials, and other forms of directed benevolent giving | 1,032,538 | 1,097,130 | 1,646,822 | 6.3% | 50.1% |
| Total income for designated causes including capital campaign and other special projects | 7,952,007 | 13,560,009 | 12,828,084 | 70.5% | -5.4% |
| Total amount given directly to United Methodist causes | 670,242 | 630,447 | 641,781 | -5.9% | 1.8% |
| Total amount given to non-United Methodist benevolent and charitable causes | 3,015,601 | 3,137,699 | 3,342,012 | 4.0% | 6.5% |
| Equitable Compensation Funds received by Church or Pastor | 294,365 | 270,890 | 254,012 | -8.0% | -6.2% |

| | | | | | |
|---|------------|------------|------------|--------|-------|
| Advance Special, apportioned, and connectional funds received by church | 44,643 | 93,539 | 90,700 | 109.5% | -3.0% |
| Other grants and financial support from institutional sources | 511,660 | 472,916 | 499,450 | -7.6% | 5.6% |
| Total Support from other institutions | 850,668 | 837,345 | 844,162 | -1.6% | 0.8% |
| Total income from connectional and other institutional sources outside the local church | 82,977,009 | 84,365,294 | 85,234,541 | 1.7% | 1.3% |

| Staff (count) & Compensation (in dollars) | | | | | |
|---|-------------|-------------|-------------|------------------------------|------------------------------|
| Statistical Category | 2023 | 2024 | 2025 | % Change 2023 to 2024 | % Change 2024 to 2025 |
| Number of full-time Ministerial/Worship Staff | 158 | 150 | 154 | -5.1% | 2.7% |
| Number of part-time Office Staff | 52 | 48 | 40 | -7.7% | -16.7% |
| Number of full-time childcare/daycare/pre-school workers | 77 | 71 | 75 | -7.8% | 5.6% |
| Number of other full-time employees | 32 | 33 | 28 | 3.1% | -15.2% |
| Total Number of Full-Time Employees | 319 | 302 | 297 | -5.3% | -1.7% |
| Total compensation for all Full-Time Employees | 28,286,204 | 27,958,079 | 28,990,430 | -1.2% | 3.7% |
| Number of part-time Ministerial/Worship Staff | 597 | 572 | 570 | -4.2% | -0.4% |
| Total compensation for part-time Ministerial/Worship Staff | 10,602,761 | 12,367,991 | 12,543,951 | 16.6% | 3.7% |
| Number of part-time Office Staff | 259 | 256 | 268 | -1.2% | 4.7% |
| Total Compensation for part-time Office Staff | 3,252,908 | 3,418,920 | 3,525,796 | 5.1% | 3.1% |
| Number of part-time childcare/daycare/pre-school workers | 425 | 426 | 431 | 0.2% | 1.2% |
| Total compensation for part-time Childcare Workers (in dollars) | 3,515,043 | 3,912,548 | 3,926,613 | 11.3% | 0.4% |
| Number of other part-time employees | 325 | 315 | 316 | -3.1% | 0.3% |

| | | | | | |
|---|------------|-------------|-------------|--------|-------|
| Total compensation for all other part-time employees | 4,094,630 | 3,662,346* | 3,482,746* | -10.6% | -4.9% |
| Total number of part-time employees | 1606 | 1578 | 1597 | -1.7% | 1.2% |
| Total compensation for all part-time employees | 21,465,342 | 23,590,845* | 23,512,491* | 9.9% | -0.3% |
| Total number of all employees | 1925 | 1880 | 1894 | -2.3% | 0.7% |
| Total number of individuals who volunteer at the church | 15,734 | 16,042 | 15,634 | 2.0% | -2.5% |

*Estimated due to some data entry errors in data set