

## What's Inside



"Because of  
Winn Dixie"  
movie review  
Page 3



Connection  
giving insert  
Page 5



Annual Conference  
supplement  
Page AC-1

## INDEX

CALENDAR .....	2
APPOINTMENTS ....	3
THE NATION .....	4
THE WORLD .....	13
CLASSIFIEDS .....	16

## Bishop Matthews hosts Pan Methodist gathering

Bishop Marcus Matthews convened a gathering of the Pan Methodist Bishops from the Philadelphia area Tuesday, April 5th.

Discussion focused on how the "Methodist Family" can collaborate to raise the visibility and witness of Methodists in the Philadelphia area. Further discussion included partnering with denominational seminaries to set-up satellite campuses in Philadelphia, exploring ways to stabilize church communities, challenging federal and state leaders and legislators to vote against the proposed Medicaid cuts, sponsoring annual Pan Methodist seminars and worship services with the Bishops preaching.

A long range planning committee will be established to develop further plans and events including contacting other Bishops in the Pan Methodist Family.



Those in attendance included (left to right) Presiding Elder John Gee representing Bishop Charles L. Helton, 7th District of the Christian Methodist Episcopal Church, Bishop Richard F. Norris, Sr., First District of the African Methodist Episcopal Church, Bishop Marcus Matthews, and Rev. Ralph E. Blanks, Central District Superintendent Designee representing the Cabinet of the Eastern Pennsylvania Conference.

## Bringing shalom to communities around the globe

By Suzy Keenan

In the Eastern Pennsylvania Conference, four communities have chosen to create "Shalom Zones" to bring healing and wholeness to their neighborhoods. As the point office for "Communities of Shalom," the Office of Urban and Global Ministries, under the direction of The Rev. Dr. Dorothy Watson Tatem, provides training, coordination, and funding.

The Shalom Partnership of Lancaster, Frankford Group Ministries, Reading Communities of Shalom, and Pottsville Area Communities of Shalom are all a part of the initiative, organized through the General Board of Global Ministries. The National Shalom Committee, chaired by Bishop John R. Schol, met in Philadelphia, PA, March 30-31 to assess progress and to set goals and direction for the next four years.

"I think John Wesley would have liked Shalom" said Rev. John Culp, new National Shalom Committee member from South Carolina. He was referring to the Communities of Shalom initiative



The Rev. Dorothy Watson Tatem (red hat) addresses the National Shalom Committee during its Philadelphia meeting.

after learning about its biblical emphasis and fruits in congregations and communities across the United States and in Zimbabwe and Ghana. Today there are more than 300 Shalom sites working on spiritual renewal, community economic development, strengthening race, class and cultural relationships, and health and healing in the community.

"Urban and rural communities alike have embraced shalom goals and principles. Shalom brings the church into

the community and the community into the church," said Bishop Schol, Resident Bishop of the Washington Area. "Shalom is scriptural and it's the way in which we live out the Wesleyan principle that the world is our parish. For this reason shalom is truly timeless."

Bishop Schol recalled that during the 1992 General Conference, when the fires after the Los Angeles uprising were burning, General Conference

See SHALOM P14

## Gala to celebrate old Delaware Conference

Rev. Dr. Patricia Bryant Harris

The Delaware Conference — a source of pride, an era of shame. Before we were United Methodists, before we were one, there was the Delaware Conference of the Methodist Church consisting of all the African American churches in New York City, New Jersey, Philadelphia and Chester; Delaware, the Eastern Shore of Maryland, and the Eastern Shore of Virginia, AND there were the Anglo Conferences: New York, Northern New Jersey, Southern New Jersey, Philadelphia, Peninsula, and Virginia.

For African Americans, the Delaware Conference was, and in our memories continues to be a source of pride. The old Delaware Conference, as it is affectionately referred to, organized in 1864 with 34 churches. During its 101 years of existence, the spiritual life of the pastors and the

See GALA P15

# Conference Calendar

## May 3 Senior Days at Gretna Glen - Spring Fling

Fellowship fun for Senior Adults. Tuesday, May 3, 2005. Come and enjoy the fellowship while we laugh and sing with friends. We will be entertained by several forms of humor, drama, and song. Enjoy a hot meal and tasty snacks. The grounds of Gretna Glen come alive and are bursting forth waiting to share with you their beauty. Cost is \$20 per person. Contact the camp at registrar@gretnaglen.org or 717-273-6525 for more information. [www.gretnaglen.org](http://www.gretnaglen.org)

## May 4 Burning Bush Cafe

The Burning Bush Café presents the bands "Spoken", "Staple", "Subseven," and "Kids in The Way," all part of the "Spoken" Tour! This is the only date for this tour in the Philadelphia Region. This show has everything, hard rock, punk rock, a little screamo, and a little hardcore. Doors open at 6 PM and the show will start at 6:30 PM. The admission cost is \$9 per person. For more information and driving directions visit the Burning Bush Café on the web at <http://www.burningbushcafe.org/> Event held at Tabor UMC, 2209 Hendricks Station Road, Woxall, PA.

## May 6 Innabah 2nd Annual Golf Tournament

Spring Hollow Golf Course on Friday at 1:00 p.m. The cost for one player is \$75.00. This golf scramble includes a light lunch, dinner, golf cart, and 18 holes of golf. To participate or help sponsor this fundraiser, contact Christy Heflin for a brochure, [innabahdirector@aol.com](mailto:innabahdirector@aol.com), 610-469-6111. Sign-up soon! Space is limited.

## May 16-18 EPAUMC Church Multiplication Training

Location: Morgantown Holiday Inn (just off the PA turnpike)  
Two Tracks Available:  
#1 Church Planters - Planting a New Church or Restarting a Congregation  
#2 Church Multiplication - Churches Planting New Churches. All clergy have received a brochure by US Mail. Registration Deadline May 3; registration contact: Norma Figueroa, 548 S. Ann St., Lancaster, PA 17602; phone: 717.394.1168. For additional information about the training contact: Rev. Rene A. Perez, 1.800.828.9093 or [rene.perez@epaumc.org](mailto:rene.perez@epaumc.org)

## May 20-22 EPA Youth Annual Conference (YAC) - East Stroudsburg University

2005 Youth Annual Conference (YAC) 2005 will be held at East Stroudsburg University the weekend of May 20-22, 2005. This is to accommodate the youth who will be involved in confirmation activities on Pentecost May 15th. The theme for YAC 2005 is "Youth Under Construction" (Phil. 1:6). There will be speakers and music groups from our own Eastern PA

Conference, games, workshops, small group Bible study, dancing and lots of fun! We are trying to keep costs at a minimum to maximize participation. Registration will be available on-line. Watch for a postcard and more information at the conference

website in the coming weeks. If you have a recommendation for a speaker or music or drama group from the Eastern PA Conference, please e-mail the suggestion to Georgette Hall-Peterson at [ghpeter@comcast.net](mailto:ghpeter@comcast.net). Make your plans now to join us at YAC 2005.

## May 21 Simpson House Anniversary Day Celebration and Craft Show

Simpson House will have its annual Anniversary Day Celebration and Craft Show on Saturday, May 21, from 10 a.m. to 2 p.m. A sandwich lunch is available. There will be a Baked Goods Table. Tables are available for \$35.00. Please contact Terri Steinberg at Simpson House for information.

## May 21 Harry Hosier Scholarship Awards Luncheon

(See ad p14.)

## June 4 Celebration Luncheon for Rev. Philip L. Ponce

A celebration luncheon for Rev. Philip I. Ponce, District Superintendent of the Central District (formerly the Hosier/Philadelphia South and Albright/Lebanon Reading Districts) of the Eastern Pennsylvania Conference of The United Methodist Church will be held on Saturday, June 4, 2005 at 11:30 a.m. at Eastwick at The Meadows, 6630 Lindbergh Blvd., Philadelphia, PA. Conference staff, pastors, representatives of all churches in the Central District as well as colleagues, family, friends are invited to attend the celebration of Rev. Ponce's superintendency as he prepares to continue in his ministry at Berwyn UMC. Bishop Marcus Matthews, resident and presiding bishop of the Eastern Pennsylvania Conference will bring greetings. The celebration luncheon cost is \$35 and includes a gift for the honoree. For tickets and more information call Dr. Mary White at 610-519-9812. If unable to attend, gifts and notes of appreciation may be sent to Rev. Ponce in care of Dr. Mary White, District Lay Leader, 312 Rockingham Road, Rosemont, PA 19010 or emailed to [mwhite9891@aol.com](mailto:mwhite9891@aol.com).

## June 5 Reception and Celebration for Rev. Michele Wright Bartlow

You are invited to join churches and pastors of the East District on Sunday, June 5, 2005, to greet Rev. Bartlow and acknowledge her work with the district as she prepares to leave the office of district superintendent and assume her new appointment as

senior pastor of First United Methodist Church of Germantown. The open house and celebration will be held from 3:00 p.m. to 6:00 p.m. in Wesley Hall at Evangelical Manor, 8401 Roosevelt Boulevard, Philadelphia. The afternoon will include fellowship, refreshments, singing, stories and tributes, and musical presentations. Come for all or part of the afternoon. For more information contact Audrey Nowicki, 215-674-4368.

## July 16 EPA CONFERENCE CHURCH SOFTBALL TOURNAMENT

The EPA Conference UMC Softball Tournament will be held on Saturday, July 16, 2005. Jarrettown UMC administers the tournament. This is an intermediate pitch (easy to hit), one day, double elimination tournament which starts with devotions at 9:00 am, first game at 9:30 am, and ends with the championship game at about 6:00 pm. All teams are guaranteed three games. The tournament is held at Mondauk Commons Park that is located just off the Fort Washington Exit #339 of the Penna. Turnpike near Ambler, PA. The facilities are excellent with four softball fields, bathroom facilities and a large playground for the kids. Families are urged to attend. Teams may be men only, women only or co-ed. The cost is \$110 registration per team and each team pays the umpire \$15 for each game that it plays. Plaques are given for first and second place. To register or receive further information please contact Ross Brightwell, tournament coordinator, day or evening, at 215/643-1269, or at [rossbrightwell@worldnet.att.net](mailto:rossbrightwell@worldnet.att.net).

## July 17-21 SOULfeast

SOULfeast, sponsored by The Upper Room, is the conference for those who hunger for a deepening spirituality. SOULfeast provides an exciting opportunity for deeper discovery, and will be especially meaningful for those who have experienced Upper Room resources like Companions in Christ, The Walk to Emmaus, and The Academy for Spiritual Formation. <http://www.upperroom.org/soulfeast/>

## August 20 United Methodist Night at the Phillies

(See ad p14.)

## WESLEY HERITAGE TOUR OF ENGLAND MAY 18-27, 2006



Depart from Philadelphia  
Approx. \$2,400. per person

Contact: Heidi Freas, Grace UMC of Telford, PA; [hfreas@msn.com](mailto:hfreas@msn.com) (215) 799-2353. Detailed itinerary available upon request.

## Healing the Wounds of Racism Schedule

All classes are Introductory Level 1  
•May 15-17 - Camp Innabah Program Center, Spring City, PA  
•August 22-24 - St. Raphaela Mary Retreat Center, Haverford, PA  
•August 26-28 - St. Raphaela Mary Retreat Center, Haverford, PA  
•September 15-17 - Location to be announced  
•October 2-4 - Port-O-Call, Ocean City, NJ  
•November 7-9 - Kirkridge Retreat

Direct inquiries to: EPAUMC, The Office of Healing the Wounds of Racism, Attn: Hilda Campbell, Director Human Relations and Leadership, 610-666-9090, ext. 224.

## NEW Spirit submission requirements

Submit an article or photographs to the *NEW Spirit* using e-mail (we accept material via U.S. Mail, too), in only the following formats: Microsoft Word document (.doc), Rich Text format (.rtf), or Simple text file (.txt). We prefer photos sent as actual photographic prints or, electronically, as .tif or .jpg. We cannot use pictures less than 800 pixels wide. Please send logos or other graphic art in either .wmf or .eps format.

Email your items to [communications@epaumc.org](mailto:communications@epaumc.org).



Published 10 times per year by  
The Eastern Pennsylvania Conference of  
The United Methodist Church

Valley Forge Corporate Center  
980 Madison Avenue, Norristown, PA 19403

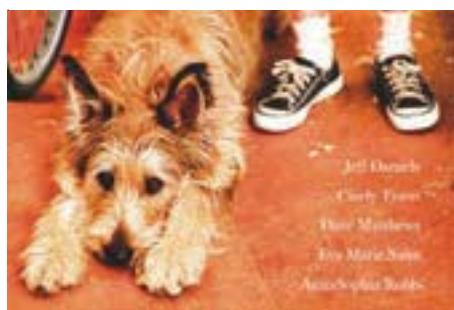
Bishop Marcus Matthews Philadelphia Area Bishop  
Suzy Keenan Director of Communications  
Amy Botti Graphic Design and Layout

Annual subscription \$12

Please submit articles for publication by the 10th of the month to:  
The Eastern Pennsylvania Conference of The United Methodist Church,  
P.O. Box 820, Valley Forge, PA 19482-0820  
or via e-mail to [communications@epaumc.org](mailto:communications@epaumc.org)

Periodical postage paid at Norristown, PA 19403, USPS #0019604  
POSTMASTER: Send address changes to:  
NEW Spirit at EPA Conference, P.O. Box 820, Valley Forge, PA 19482-0820

# Because of Winn Dixie



Because of Winn-Dixie

## Movie Review

**Production Company:** 20th Century Fox

**Director:** Wayne Wang

**Principals:** Annasophia Robb, Jeff Daniels, Cicely Tyson, Dave Matthews, Eva Marie Saint

**Rating:** PG (mild language)

By Gregg Tubbs

You don't have to be a sucker for stories with lovable dogs, precocious kids, wise elders and happy endings to enjoy *Because of Winn-Dixie*, but it sure helps! Everyone who says, "they don't make family films like they used to," will be charmed by this heart-warming tale about a fragmented little town of lost souls, coming together because of a scruffy mutt, with a perpetual smile, who somehow "knows how to be a friend."

Based on the award winning children's book by Kate DiCamillo, acclaimed director Wayne Wang's *Because of Winn-Dixie* tells the story of a lonely young girl who goes on an errand for groceries, and comes home with a dog—a stray she names Winn-Dixie, after the market where she finds the dog. As the bond between the girl, India Opal (wonder-

fully played by AnnaSophia Robb) and her canine companion grows, so do the connections between the people in her life.

Naomi, the small Florida town where Opal and her father, a Baptist minister (Jeff Daniels) have just moved, used to be the kind of town where the renowned "southern hospitality" was a reality—a place where people felt connected, cared for each other and helped one another. But over the years, that spirit of community was lost. Maybe it was due to the closing of the local candy factory, or just the fragmentation of modern life, but once-friendly Naomi has become a town of strangers.

As *Winn-Dixie* frolics around town, with Opal in tow, each random encounter uncovers another lonely soul—shopkeepers, librarians, children and recluses. The loveable mutt somehow has a way of making people open up. Soon they are sharing their stories, their dreams, and most importantly their sorrows, in a way that some people only will when their defenses are disarmed by a guileless pooch or child.

Everyone in Naomi seems to have a secret sorrow that they bottle up and refuse to share—not necessarily a sin they need forgiven, or a mistake they need to make right—but one of the sad, painful things that happen in every life. This includes Opal and her dad, who she always calls "The Preacher," and never father. Opal's mother left them when she was just six and the split has strained her relationship with her father, who refuses to talk about his wife or why she left.

In the film's most touching scene, Opal (suggesting it was her dog's idea) convinces The Preacher to tell her ten things he remembers about her mother. This is a turning point that marks the beginning of healing for the two of them. Like many old-fashioned family films, *Because of Winn-Dixie* sets out to teach a few gentle lessons about life and love, and each has the ring of truth.

Inspired by the list of ten things about Opal's mother, I've made my own list.

Ten things I learned from *Because of Winn-Dixie*:

1. Cold and wet is a good thing, when it's a dog's nose.
2. Sometimes the sweet and the sad in life are so tied together it's hard to separate them.
3. Everybody needs a friend.
4. There's nothing wrong with making church more convenient.
5. Even a turtle must sometimes stick its head out of its shell.
6. Some people see with their eyes. Others see with their heart.
7. You shouldn't be too quick to judge people, or dogs, by their past mistakes.
8. "Teach us Lord, to love one another," is a short prayer that says a whole lot.
9. You've got to love what you've got, while you've got it.
10. Life's joys and sorrows are always better shared with others.

*Because of Winn-Dixie* wears its heart on its sleeve, its old-fashioned sentimentality barely masking a surprisingly serious message that might be a little too deep for younger kids, but just fine for children ten or older, like Opal. This film should appeal particularly to Christian families because of its strong sense of faith that allows one, without too much trouble, to actually see the hand of God at work in the guise of a shaggy, smiling dog.

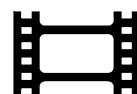


A scruffy pooch named Winn-Dixie helps heal the troubled relationship between Opal (AnnaSophia Robb, left) and her father.  
Copyright © 2005 20th Century Fox

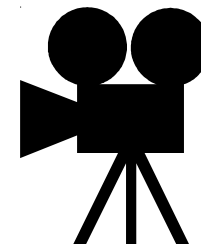
You smile because, just like an uplifting hymn, this film assures you that troubles are temporary, better times are ahead and everything is better when it's shared with friends.

Gregg Tubbs is a freelance writer living in Columbia, Md. This review was developed by UMC.org, the official online ministry of The United Methodist Church.

## Study Questions for the Movie:



- In the beginning of the film, Opal says "It's a pretty good story. I hope I tell it right." Do you think she did? If you've read the book, how did the film compare?
  - Have you ever had a dog, or other pet that "knew how to be a friend?"
  - To you, what does it mean to be a true friend? Can Jesus be a true friend?
  - Were you bothered by the fact that The Preacher's church was in an old convenience store? Is it necessary for "church" to be in an actual church? ( See Matt. 18:20)
  - The Preacher seems to have some trouble connecting with his congregation. Opal compares him to a turtle who won't stick his neck out. Do you think there is a connection? Why do you think he won't stick his neck out?
  - What did you think of the "Litmus Lozenges?" Have you ever felt that a flavor could remind you of an emotion? If so, what?
  - Did you see God at work in *Winn-Dixie* the dog? How?
  - The film was filled with colorful and flawed characters. Who did you identify with the most?
  - Each character seemed alone, in a way. What did they need to feel less alone? Do you think faith played a role in restoring the spirit of the town?
  - Opal said about Winn-Dixie "I didn't find him. He found me!" What do you think she meant? In what way did he give her what she needed?
- Group Activities:**
- **The Power of Song:** This spiritually uplifting film ends with all the characters together singing the old hymn "Since I Lay my Burden Down" (also known as "Glory, Glory Hallelujah"). This is a song that invites improvisation with its lyrics, just as the characters in the film did. If you can, find the words and music to this song. If you can't find them, here's a sample:  
"Glory, glory, hallelujah, since I lay my burden down.  
Life is sweeter, so much sweeter, since I lay my burden down.  
Feel like shouting Hallelujah... since I lay my burden down.  
Feel like dancing hallelujah since I lay my burden down."  
Divide your group into smaller teams or pairs and ask each team to prepare four verses of their own to add to the song. Once they're done, have each team share their own new lyrics, and discuss why they chose them. Close out, if you can with a sing-along of your new "Lay My Burden Down."
  - **Healing Through Fellowship:** A major theme of the film is the healing power of fellowship—coming together to share your joys, sorrows and concerns. As a group, discuss the importance of sharing with others, particularly other Christians. Finally, just like the characters in the film, share the joys of fellowship.



## Appointments

Bishop Marcus Matthews announces the following appointments effective July 1, 2005:

### PASTOR:

John Grove  
Rick Rimert  
Mandy Stanley  
Albert Mosley  
Chris Fisher  
Milton Hartenstine  
Gary Nicholson  
Sandra Dufresne  
Janet Hess  
Maridel Whitmore  
Bob Coombe  
Mary Jane Kirby  
Jim Garner  
John Gudikunst  
A. Roger Reddick  
Glenn Brown  
Amy Emmett  
Jeffrey Goodman  
Jim Durbano  
Tony Arrington

### FROM:

Mohnton: Calvary  
Berwyn  
Phila: Juniata Park  
Schuylkill Haven First  
Attending School  
Bangor: First  
Jarretstown  
Phila: Green Lane  
Media: First  
Yardley  
Havertown: Union  
Ephrata: Hope  
Scottsville  
Warrington: St. Paul  
Phila: Camphor  
Hellertown: St. Paul  
Parkside  
Attending School  
Linwood Heights  
Phila: Mother  
African Zoar  
West Chester  
Leola  
Bethlehem: Epworth  
Geigertown: St. Paul's  
Spring City

### TO:

Retirement  
Mohnton: Calvary  
Reading: St. Matthews  
Janes Memorial UMC  
Schuylkill Haven: First  
Retirement  
Bangor: First  
Jarretstown  
Retirement  
Media: First  
Yardley  
Havertown: Union  
Ephrata: Hope  
Leola  
Bethlehem: Epworth  
Geigertown: St. Paul's  
Spring City  
Mt. Nebo  
Huntingdon Valley  
Trinity (Baynton)  
Phila: Mother African Zoar  
Leave of Absence  
Retirement  
Retirement  
Retirement

## In The Nation

# Pastor serves as a bridge between two cultures

By Sandra Brands

The Rev. Don Goodwin is uniquely qualified to serve as a grief counselor at the Red Lake Reservation.

A licensed local pastor serving Pine Bend United Methodist Mission Church in northern Minnesota, he has been a deacon in the Roman Catholic Church, and he is a pipe carrier for the Anishinaabe, also known as the Ojibwe tribe of Native American Indians.

Goodwin has been hired to provide grief counseling at the Red Lake Reservation. He will join other Native American counselors, as well as counselors from the federal government and Lutheran Social Services, in helping Red Lake's people deal with the traumatic aftermath of the March 21 killings at Red Lake High School.

His ministry reflects his childhood. His father was raised a Methodist and attended Pine Bend United Methodist Church; his mother was raised a strict Catholic in Twin Lakes, Minn.; and he is Anishinaabe, raised, in part, on the reservation.

"Because Don is a deacon in the Catholic church and a local pastor at The United Methodist Church, Indian people know him as a Christian, but also as an Indian elder who does sweat lodges and pipe ceremonies,"

said Mary Ann Walt, former director of Native American Concerns for the Minnesota Council of Churches, who hired Goodwin to provide counseling. "It's a great bridge when you can accept both cultures and spirituality."

Walt accompanied Goodwin and the Rev. Bill Beyer, pastor of First Evangelical Church of America in Fertile, Minn., to Red Lake the week following the shootings to assess the needs of the community.

"I wanted to see how the churches could help or assist, what they wanted from us—if they wanted anything," Walt said. "They needed counselors—and American Indian counselors like Don Goodwin or Les Gibbs from Fon du Lac Reservation.

"An Indian counselor can relate so much better with (the Red Lake community), spiritually and physically," she said. "A child can say much more through an Indian person whom he trusts than he can to a non-Indian person. If I were in that kind of situation, I would have to have an Indian counselor or someone I had worked with for years before I would want to open up."

On March 21, 16-year-old Jeff Weise shot and killed ten people, including six students, and wounded seven others before killing himself. Within a week, Louis Jourdain, the 16-year-old



The Rev. Don Goodwin is serving as a grief counselor at the Red Lake Reservation. A UMNS photo by Sandra Brands

son of the Red Lake tribal chairman was arrested and charged with conspiracy in connection with the school shootings.

Two weeks later, Goodwin made a second trip to Red Lake to determine what the tribe needed.

"The visit went well," he said. "I talked to an elderly lady and man (on April 4), and they both definitely need a lot of grief counseling. They needed someone to be there—a chaplain—and when they need you, you're available."

One of the first things that must be done, Goodwin said, is to go through the school with sage, blessing every room and corridor. "A blessing with sage is very powerful," he said.

A healing ceremony was planned by spiritual leaders for April 11, but it was postponed when the FBI said it

had received uncorroborated information that there was a gun at the high school.

Traditional Ojibwe ceremonies and spiritual practices have been and will continue to be part of the healing process. At the same time, many members of the tribe are practicing Christians. Tension arises because tribal members have lived through various attempts by a dominant culture to wipe out the traditions, language and culture of a minority culture.

"The majority of our spiritual leaders won't have anything to do with Christianity, but a lot of our kids have parents who are Christians," he said.

Goodwin has experienced firsthand the tension that comes when the two faith traditions intersect.

"I was called to officiate at a funeral in Grand Portage one time," he said. "One side of the family wanted a native funeral, the other wanted a Christian funeral."

Goodwin was able to combine the traditions of both.

"My strong, strong belief in God is made stronger because of these cross-cultural ties," he said. God is the Creator Gichi Manidoo, sometimes called "grandfather," by the Anishinaabe. The pipe is as sacred to Native Americans as the cup and bread to Christians because smoke carries prayers to the spirits.

Goodwin has deep personal connections with the tribe. His sister, Tricia Goodwin, is a teacher at Red Lake Middle School, which shares its campus with the high school. He knows most of the victims' families, and his children grew up in Minneapolis with the current tribal chairman, Floyd "Buck" Jourdain.

Goodwin believes he can bring to them native spirituality, one-to-one counseling, grief counseling, talking circles and smudging ceremonies.

A man of deep faith, he said that in the midst of the tragedy, "I'm sure God is there, but I believe God says, 'Well I was there, but you didn't recognize me.'"

Recovery will be a day-to-day process, he said. "I'll do whatever's needed. Wherever there's a need, that's where I'll go. No matter what denomination you are, I'll still be there for you."

Brands is the editor for print and electronic publications for the Minnesota Annual Conference.

## The Nation in Brief

### • STUDENTS BATTLE TO LEAVE

Three Liberian students at church-related Southern Methodist University overcame life-threatening obstacles to reach the school from their war-torn homeland—walking 30-plus miles through checkpoints peppered by rebel gunfire, then riding rickety buses to small planes that carried them through seven risky stops on their 36-hour trip to America. Even before their dangerous exodus, they bested stiff competition to receive full scholarships to United Methodist-related Perkins School of Theology. Each battled for nine months to obtain visas allowing them to enter the United States, even as civil unrest blocked paperwork and closed key government offices. Yet, their goal is to return to Liberia in 2006 to teach, preach and share a message about forgiveness. The Rev. Isaac Chukpue-Padmore, 39, Yatta Young, 53, and Anna Kaydor, 28, arrived in Dallas last September with no clothing, money or worldly possessions. Seminary leaders say their courage and fortitude are driven by an intense desire to further their education so they can return home and serve their fellow Liberians.

### • AMONG HOMELESS

While many college students headed for the beach for spring break, a group from a Texas church spent the time off shivering under a bridge and scrounging for food, learning about life as homeless people. Six young men and women from First United Methodist

Church of Round Rock spent three days on the streets of nearby Austin and several area communities. Each started with only \$7 and faced the daily challenges of finding food, transportation and a place to sleep. A study by the Urban Institute estimates 3.5 million people, including 1.35 million children, are likely to experience homelessness in a given year. A growing shortage of affordable rental housing and a simultaneous increase in poverty are largely responsible for the rise in homelessness during the past 25 years, according to the National Coalition for the Homeless.

### • CONNECTION 2005

Overworked, underpaid and "pizza'ed out," more than 200 youth workers gathered at West End United Methodist Church to be reminded that they are "beloved children of God" "masterpieces of God's creation" and "called by God" to teach and lead young people. Speakers and workshop leaders spent four days telling youth workers of how important their roles are in the lives of young people and giving them tips and tools for carrying out their ministry. Connection 2005 was held March 30-April 3 and sponsored by the denomination's Board of Discipleship.

### • UMCOR TO DE

Water levels along the Delaware River were the highest in decades as recent floods displaced more than 7,000 people. UMCOR's executive for US disaster response, Tom Hazelwood, will visit

affected areas this week. The agency has sent emergency grants to Greater New Jersey, Western New York, and Troy annual conferences. Troy Conference covers the regions of northeastern New York, where the floods have been, and Vermont. Volunteers are using flood buckets from Mission Central to clear away water damage in the Troy Conference. In all these regions, floodwaters have caused widespread destruction particularly in impoverished communities. Emergency aid for such recoveries depends on your generosity to UMCOR Advance #901670, Domestic Disaster Response. Please pray for the vulnerable people caught in the flooding, and consider a gift of money now.

### • DIVEIN-MAKE WAVES 2006

The eighth national Exploration gathering for young people considering ordained ministry in the United Methodist Church will be held Nov. 17-19, 2006, at the Adam's Mark Hotel in Jacksonville. The theme is "Dive In-Make Waves" from Isaiah 43:1-2: "I have called you by name, you are mine. When you pass through the waters, I will be with you." Exploration 2006 is for young people (high school seniors through age 24) who are considering ordained ministry (either elder or deacon) as their vocation. For more information, visit the Exploration 2006 Web site at [www.gbhem.org/exploration](http://www.gbhem.org/exploration), contact the Division of Ordained Ministry at [exploration@gbhem.org](mailto:exploration@gbhem.org) or call (615) 340-7372.



# Sharing God's Gifts

The Eastern Pennsylvania Conference is grateful to God for the generosity evidenced in the Fund Summary.

We would also like to recognize those churches as represented on the following pages that have paid over 25% of their CMF, the churches faithfully giving towards CMF, World Service, and the General Church Fund as well as the overall increase in giving by \$133,024.

### “What does it mean to be a generous giver?”

It certainly does not mean to give more money than anyone else. Jesus never taught that we were to give that which we did not have to give! Generosity is a spiritual gift. Paul stated, “We have gifts that differ according to the grace given to us . . . the giver, in generosity.” (Romans 12:6-8, NRSV). A generous giver has adopted a lifestyle of giving. A generous giver contributes his or her time, talent, prayers, and financial resources with a willing and joyful spirit. I have known people from millionaires to homeless people who were generous givers. Being a generous giver is a spiritual response to God’s goodness.”

*David Bell, Director of the Center for Christian Stewardship of The United Methodist Church*



**Full Disclosure:  
Everything the  
Bible Says About  
Financial  
Giving  
by Herb Miller  
Discipleship  
Resources, 2003**

*Full Disclosure* ex-

plores twenty financial stewardship themes and includes appendices for ten sub-themes. Each theme (chapter) includes stories and quotes, commentary on relevant Old Testament and New Testament passages, and questions for reflection. Whether or not a pastor or layperson is comfortable thinking or talking about giving money and other financial assets to God through the church, this book is understandable, inspirational, and informative. Herb Miller states: “Christian stewardship uses the life God gave you for God’s purposes. Your money is a tangible extension of that life. God does not so much call you to give your money as to give yourself. Yet genuinely giving yourself always involves giving that financial extension of who you are” (page 29).

*Commentary by David Bell. Copyright © 2005 Ecumenical Stewardship Center. Reprinted with permission from Giving: Growing Joyful Stewards in Your Congregation.*

### Fund Summary by District as of: March 2005

District	Fund	Annual Commitment 2005	YTD Commitment Jan-March 2005	YTD Payment Jan-March 2005	Balance Due March 2005	% Paid	YTD Payment Jan-March 2004	Increase or (Decrease)
<b>Connection Ministry Fund</b>								
Central District	Rev. Philip Ponce	0001	683,761	204,179	159,683	(44,496) 23%	134,850	24,833
East District	Rev. Michele Bartlow	0001	626,453	187,936	132,128	(55,808) 21%	111,317	20,810
Northeast District	Rev. Rodney Shearer	0001	537,117	161,135	130,602	(30,533) 24%	106,562	24,040
Northwest District	Rev. Albert Maloney	0001	444,791	133,334	110,748	(22,586) 25%	102,768	7,981
Southeast District	Rev. Susan May	0001	586,801	176,040	143,169	(32,871) 24%	119,290	23,880
Southwest District	Rev. Robert Hoffman	0001	775,034	232,510	198,710	(33,800) 26%	167,231	31,480
			<b>3,653,956</b>	<b>1,095,134</b>	<b>875,041</b>	<b>(220,093) 24%</b>	<b>742,017</b>	<b>133,024</b>
<b>World Service Fund</b>								
Central District	Rev. Philip Ponce	0003	221,113	66,027	51,794	(14,232) 23%	41,547	10,247
East District	Rev. Michele Bartlow	0003	142,207	42,662	33,805	(8,857) 24%	28,291	5,515
Northeast District	Rev. Rodney Shearer	0003	173,723	52,117	41,028	(11,089) 24%	34,846	6,182
Northwest District	Rev. Albert Maloney	0003	138,179	41,419	34,930	(6,489) 25%	32,018	2,911
Southeast District	Rev. Susan May	0003	187,173	56,152	44,278	(11,874) 24%	39,252	5,026
Southwest District	Rev. Robert Hoffman	0003	288,847	86,654	73,994	(12,660) 26%	44,477	29,518
			<b>1,151,241</b>	<b>345,030</b>	<b>279,830</b>	<b>(65,200) 24%</b>	<b>220,431</b>	<b>59,399</b>
<b>General Church Fund</b>								
Central District	Rev. Philip Ponce	0004	224,446	67,016	51,788	(15,228) 23%	40,411	11,377
East District	Rev. Michele Bartlow	0004	137,191	41,157	30,760	(10,397) 22%	25,792	4,968
Northeast District	Rev. Rodney Shearer	0004	158,928	47,678	39,166	(8,512) 25%	30,792	8,374
Northwest District	Rev. Albert Maloney	0004	147,901	44,334	37,636	(6,697) 25%	29,651	7,986
Southeast District	Rev. Susan May	0004	174,981	52,494	41,868	(10,627) 24%	37,744	4,124
Southwest District	Rev. Robert Hoffman	0004	157,179	47,154	38,687	(8,467) 25%	42,804	(4,117)
			<b>1,000,626</b>	<b>299,833</b>	<b>239,905</b>	<b>(59,928) 24%</b>	<b>207,193</b>	<b>32,712</b>
<b>Direct Billing</b>								
Central District	Rev. Philip Ponce	0018	415,816	104,330	85,316	(19,014) 21%	92,895	(7,579)
East District	Rev. Michele Bartlow	0018	413,928	103,482	79,339	(24,143) 19%	79,075	264
Northeast District	Rev. Rodney Shearer	0018	309,029	77,292	71,760	(5,532) 23%	66,220	5,540
Northwest District	Rev. Albert Maloney	0018	255,486	63,872	58,170	(5,702) 23%	60,022	(1,852)
Southeast District	Rev. Susan May	0018	345,926	86,482	73,354	(13,127) 21%	71,716	1,638
Southwest District	Rev. Robert Hoffman	0018	467,211	116,803	102,789	(14,014) 22%	102,732	57
			<b>2,207,396</b>	<b>552,260</b>	<b>470,727</b>	<b>(81,533) 21%</b>	<b>472,660</b>	<b>(1,932)</b>
<b>Current Pastor MPP</b>								
Central District	Rev. Philip Ponce	0019	302,094	81,376	63,044	(18,332) 21%	62,485	559
East District	Rev. Michele Bartlow	0019	293,835	80,217	63,177	(17,040) 22%	57,341	5,837
Northeast District	Rev. Rodney Shearer	0019	261,191	67,170	65,839	(1,331) 25%	60,403	5,436
Northwest District	Rev. Albert Maloney	0019	212,579	54,366	48,676	(5,690) 23%	45,858	2,817
Southeast District	Rev. Susan May	0019	277,254	74,235	64,727	(9,508) 23%	56,389	8,338
Southwest District	Rev. Robert Hoffman	0019	324,532	81,781	71,190	(10,591) 22%	73,506	(2,316)
			<b>1,671,485</b>	<b>439,146</b>	<b>376,653</b>	<b>(62,493) 23%</b>	<b>355,982</b>	<b>20,671</b>
<b>Current Pastor CPP</b>								
Central District	Rev. Philip Ponce	0020	133,750	35,970	29,080	(6,889) 22%	26,884	2,196
East District	Rev. Michele Bartlow	0020	128,292	35,309	27,826	(7,483) 22%	24,884	2,942
Northeast District	Rev. Rodney Shearer	0020	113,165	29,137	28,503	(635) 25%	26,329	2,174
Northwest District	Rev. Albert Maloney	0020	81,207	20,865	18,528	(2,337) 23%	17,111	1,418
Southeast District	Rev. Susan May	0020	114,075	30,125	26,523	(3,602) 23%	23,911	2,612
Southwest District	Rev. Robert Hoffman	0020	134,958	33,999	30,350	(3,649) 22%	30,238	112
			<b>705,448</b>	<b>185,405</b>	<b>160,810</b>	<b>(24,595) 23%</b>	<b>149,357</b>	<b>11,453</b>
<b>Clergy Insurance</b>								
Central District	Rev. Philip Ponce	0021	587,695	159,965	125,685	(34,280) 21%	114,280	11,405
East District	Rev. Michele Bartlow	0021	532,625	146,387	114,866	(31,521) 22%	102,363	12,503
Northeast District	Rev. Rodney Shearer	0021	491,392	127,402	124,633	(2,769) 25%	111,127	13,510
Northwest District	Rev. Albert Maloney	0021	357,535	91,115	85,823	(5,291) 24%	73,827	11,996
Southeast District	Rev. Susan May	0021	425,100	112,540	101,516	(11,024) 24%	92,483	9,033
Southwest District	Rev. Robert Hoffman	0021	599,590	151,577	131,622	(19,955) 22%	129,925	1,697
			<b>2,993,937</b>	<b>788,985</b>	<b>684,145</b>	<b>(104,840) 23%</b>	<b>624,000</b>	<b>60,145</b>
<b>Clergy Insurance Contribution</b>								
Central District	Rev. Philip Ponce	0022	39,000	10,578	9,622	(956) 25%	9,232	389
East District	Rev. Michele Bartlow	0022	32,594	9,041	7,065	(1,975) 22%	6,944	121
Northeast District	Rev. Rodney Shearer	0022	30,625	7,938	8,070	132 26%	7,254	816
Northwest District	Rev. Albert Maloney	0022	22,589	5,760	5,203	(557) 23%	4,950	252
Southeast District	Rev. Susan May	0022	29,320	7,663	7,245	(418) 25%	7,267	(22)
Southwest District	Rev. Robert Hoffman	0022	39,167	9,885	8,766	(1,119) 22%	9,184	(418)
			<b>193,293</b>	<b>50,864</b>	<b>45,971</b>	<b>(4,893) 24%</b>	<b>44,832</b>	<b>1,138</b>
<b>Laity Group Insurance</b>								
Central District	Rev. Philip Ponce	0023	126,370	31,593	31,456	(137) 25%	23,440	8,016
East District	Rev. Michele Bartlow	0023	100,850	24,928	22,078	(2,850) 22%	18,588	3,490
Northeast District	Rev. Rodney Shearer	0023	67,060	16,765	13,138	(3,627) 20%	12,548	590
Northwest District	Rev. Albert Maloney	0023	41,980	11,350	8,803	(2,547) 21%	5,483	3,320
Southeast District	Rev. Susan May	0023	68,200	17,050	16,670	(380) 24%	18,235	(1,565)
Southwest District	Rev. Robert Hoffman	0023	30,710	7,678	8,462	785 28%	4,621	3,841
			<b>435,170</b>	<b>109,363</b>	<b>100,607</b>	<b>(8,756) 23%</b>	<b>82,916</b>	<b>17,691</b>
<b>Property &amp; Liability Insurance</b>								
Central District	Rev. Philip Ponce	0024	607,935	151,984	111,894	(40,090) 18%	79,717	32,177
East District	Rev. Michele Bartlow	0024	703,480	175,870	131,104	(44,766) 19%	94,862	36,242
Northeast District	Rev. Rodney Shearer	0024	380,218	95,055	96,664	1,609 25%	71,082	25,582
Northwest District	Rev. Albert Maloney	0024	444,636	111,159	99,052	(12,107) 22%	70,464	28,589
Southeast District	Rev. Susan May	0024	544,140	136,035	107,746	(28,290) 20%	75,239	32,506
Southwest District	Rev. Robert Hoffman	0024	598,835	149,965	129,951	(20,013) 22%	86,409	43,542
			<b>3,279,244</b>	<b>820,067</b>	<b>676,410</b>	<b>(143,656) 21%</b>	<b>477,773</b>	<b>198,637</b>
<b>Church Vehicle Insurance</b>								
Central District	Rev. Philip Ponce	0025	21,615	6,485	2,366	(4,118) 11%	-	2,366
East District	Rev. Michele Bartlow	0025	26,138	7,841	6,350	(1,492) 24%	700	5,650
Northeast District	Rev. Rodney Shearer	0025	3,451	1,035	2,479	1,443 72%	-	2,479
Northwest District	Rev. Albert Maloney	0025	4,081	1,224	1,565	341 38%	48	1,517
Southeast District	Rev. Susan May	0025	23,277	6,929	6,258	(671) 27%	1,637	4,621
Southwest District	Rev. Robert Hoffman	0025	7,731	2,319	2,169	(151) 28%	-	2,169
			<b>86,293</b>	<b>25,834</b>	<b>21,186</b>	<b>(4,647) 25%</b>	<b>2,385</b>	<b>18,802</b>
<b>Worker's Compensation</b>								
Central District	Rev. Philip Ponce	0026	64,135	16,034	13,995	(2,039) 22%	12,190	1,806
East District	Rev. Michele Bartlow	0026	110,793	27,698	22,212	(5,486) 20%	16,885	5,327
Northeast District	Rev. Rodney Shearer	0026	46,983	11,746	12,958	1,213 28%	9,274	3,684
Northwest District	Rev. Albert Maloney	0026	36,222	9,056	8,644	(412) 24%	6,632	2,012
Southeast District	Rev. Susan May	0026	80,100	20,025	16,456	(3,569) 21%	12,350	4,105
Southwest District	Rev. Robert Hoffman	0026	63,830	15,958	15,761	(196) 25%	12,034	3,727
			<b>402,063</b>	<b>100,516</b>	<b>90,027</b>	<b>(10,489) 22%</b>	<b>69,366</b>	<b>20,661</b>
<b>Total All Funds</b>			<b>17,780,153</b>	<b>4,812,436</b>	<b>4,021,312</b>	<b>(791,124)</b>	<b>3,448,912</b>	<b>572,400</b>

\*Other = Direct billing, property ins., workers comp., MPP, CPP, clergy ins., lay ins., vehicle ins., clergy ins., clergy ins. contr.

## Central District

### Rev. Philip Ponce, District Superintendent

			Connection Ministry Fund 2005 Payment	% Paid	World Services Payment	% Paid	General Church 2005 Payment	% Paid	Others* 2005 Payment	% Paid
01070	Richmond Watson	Birdsboro: Christ	\$763.80	30%	\$246.90	30%	\$255.90	30%	\$654.75	26%
01080	Maxime R. Jaouen	Birdsboro: Focht Memorial	\$1,624.20	30%	\$525.30	30%	\$544.20	30%	\$8,240.14	25%
01100	J. V. Hastings	Cedarville	\$6,033.00	30%	\$1,950.90	30%	\$2,021.10	30%	\$13,137.23	25%
01140	Blaine R. Wenger	Coventryville	\$3,188.10	30%	\$1,031.10	30%	\$1,068.00	30%	\$7,716.70	25%
01150	Kenneth DeWalt	Douglassville: Hope	\$1,495.00	50%	\$0.00	0%	\$0.00	0%	\$3,837.50	17%
01160	John J. Keretzman	Elverson	\$2,863.50	30%	\$926.10	30%	\$959.40	30%	\$7,457.31	25%
01200	Louis E. Troester	Geigertown: St. Paul's	\$1,664.40	30%	\$538.20	30%	\$557.40	30%	\$7,906.57	36%
01210	Paul R. Crikelair	Goodwill	\$969.90	23%	\$313.50	23%	\$324.90	23%	\$7,549.85	27%
01230	Ronald L. Bickhart	Harmony	\$0.00	0%	\$0.00	0%	\$0.00	0%	\$3,946.16	15%
01410	Larry D. Carl	Lincoln Park: Community	\$2,645.40	20%	\$910.20	20%	\$910.20	20%	\$8,312.10	18%
01420	John C. Grove	Mohnton: Calvary	\$5,836.80	30%	\$1,887.60	30%	\$1,955.40	30%	\$14,485.07	30%
01430	Jere R. Martin	Morgantown	\$1,595.10	30%	\$515.70	30%	\$534.30	30%	\$1,498.50	25%
01460	Matthew L. Heckman	New Berlinville: St. Andrew	\$500.00	5%	\$0.00	0%	\$0.00	0%	\$8,324.97	25%
01470	David M. Lewis	New Hanover	\$10,510.20	30%	\$3,399.00	30%	\$3,520.80	30%	\$25,611.99	25%
01520	William J. Humes	Pottstown: First	\$1,500.00	21%	\$300.00	13%	\$300.00	13%	\$12,963.01	25%
01530	Stephen Herczeg	Pottstown: Salem	\$1,049.70	30%	\$339.30	30%	\$351.60	30%	\$1,681.00	25%
01540	Nicolas Camacho	Reading: Central Park	\$356.20	10%	\$115.20	10%	\$119.30	10%	\$2,260.35	8%
01560	Nicolas Camacho	Reading: Emanuel-Olivet	\$333.80	20%	\$108.00	20%	\$111.80	20%	\$2,662.31	14%
01580	Richard C. Holder	Reading: Grace	\$849.30	30%	\$274.50	30%	\$284.40	30%	\$765.25	26%
01590	John T. Pfeil	Reading: Holy Cross	\$2,763.90	30%	\$893.70	30%	\$925.80	30%	\$14,486.00	25%
01595	Quentin Wallace	Reading: New Beginnings	\$36.20	10%	\$11.70	10%	\$12.10	10%	\$560.91	8%
01600	Christopher J. Kurien	Reading: St. Matthews	\$0.00	0%	\$0.00	0%	\$0.00	0%	\$4,777.72	25%
01610	David A. Knotts	Reading: Wesley	\$1,017.00	30%	\$328.80	30%	\$340.80	30%	\$5,038.46	25%
01660	Mark Terry	St. Peter's: Mount Carmel	\$780.00	30%	\$277.20	30%	\$287.10	30%	\$2,052.75	25%
01670	Lester M. Groves	Temple	\$1,050.00	30%	\$300.00	30%	\$150.00	30%	\$5,659.72	24%
01680	Jeff Raffauf	West Lawn	\$10,104.25	25%	\$3,267.50	25%	\$3,384.75	25%	\$19,851.13	25%
01690	Nancy R. Dougherty	Wyomissing: Calvary	\$1,642.20	30%	\$531.15	30%	\$550.05	30%	\$6,852.42	26%
03020	Richard J. Rimert	Berwyn	\$4,794.00	30%	\$1,551.00	30%	\$1,605.00	30%	\$12,344.86	32%
03030	Carol A. Campbell	Bethel	\$248.00	3%	\$256.90	10%	\$200.00	8%	\$1,063.30	3%
03070	Eric H. Woodworth	Charlestown	\$756.60	30%	\$243.60	30%	\$229.50	30%	\$1,923.96	25%
03215	David J. Frame	Evansburg	\$797.70	30%	\$258.00	30%	\$267.30	30%	\$1,898.00	25%
03300	Scott A. Widmer	Honey Brook	\$0.00	0%	\$0.00	0%	\$0.00	0%	\$0.00	0%
03400	David M. Myers	Malvern	\$630.00	30%	\$360.00	30%	\$330.00	30%	\$1,384.50	25%
03460	Timothy C. Anderman	Mont Clare: Otterbein	\$1,006.50	25%	\$302.00	25%	\$341.50	25%	\$6,517.77	25%
03500	Charles C. Cole	Paoli	\$5,992.26	25%	\$1,937.76	25%	\$2,007.51	25%	\$12,694.09	25%
03530	Bronwyn Yocum	Phoenixville: First	\$4,748.72	25%	\$1,535.53	25%	\$1,590.75	25%	\$14,366.58	25%
03550	Lee F. Adams	Royersford	\$2,733.00	20%	\$883.80	20%	\$915.60	20%	\$5,799.19	17%
03570	Richard W. Howarth	Spring City	\$1,809.00	30%	\$672.90	30%	\$696.90	30%	\$10,440.99	32%
03620	Thomas Ebersole	Valley Forge	\$1,862.10	30%	\$602.10	30%	\$623.70	30%	\$2,272.50	25%
03630	Robert Wilt	Valley Forge: St. Matthew's	\$6,207.60	30%	\$2,145.60	30%	\$2,077.80	30%	\$11,642.80	25%
03650	Joseph F. DiPaolo	Wayne	\$11,271.90	30%	\$3,645.30	30%	\$3,776.10	30%	\$18,873.31	25%
05010	Donald R. Williams	Ardmore	\$1,400.00	10%	\$400.00	10%	\$400.00	10%	\$9,750.07	25%
05020	James F. McIntire	Bala Cynwyd	\$4,213.60	32%	\$724.70	58%	\$737.40	60%	\$13,773.31	25%
05030	George A. Tigh	Bethel Hill	\$3,716.10	30%	\$1,201.80	30%	\$1,245.00	30%	\$8,154.46	25%
05040	David Tatgenhorst	Bryn Mawr: St. Luke	\$2,392.50	32%	\$773.70	34%	\$801.30	35%	\$8,081.61	25%
05080	David M. Eckert	Conshohocken	\$693.50	10%	\$224.30	10%	\$232.30	10%	\$2,500.49	7%
05150	Charlene L. Gaspar	Gladwyne	\$624.00	30%	\$201.90	30%	\$209.10	30%	\$5,624.90	25%
05180	Barbara Keyser	Havertown: St. Andrews	\$945.00	25%	\$316.26	25%	\$316.26	25%	\$2,158.75	17%
05200	Robert G. Coombe	Havertown: Union	\$3,198.60	30%	\$1,034.40	30%	\$1,071.30	30%	\$10,537.46	33%
05210	Nancy L. Miller	Lafayette Hill: Messiah	\$1,303.13	13%	\$412.66	13%	\$456.08	14%	\$3,786.31	17%
05220	Gary D. Knerr	Lansdale: Christ	\$8,124.60	30%	\$2,627.40	30%	\$2,721.60	30%	\$12,283.42	25%
05230	David G. Heberling	Lansdale: First	\$7,508.75	25%	\$2,561.50	25%	\$2,486.25	25%	\$13,305.55	25%
05260	Sunil Balasundaram	Narberth	\$690.30	30%	\$223.20	30%	\$231.30	30%	\$4,885.95	25%
05270	Christine A. Croxall	Norristown: Asbury	\$2,951.10	30%	\$954.30	30%	\$988.50	30%	\$8,572.99	25%
05280	Gary L. Dillensnyder	Norristown: Haws Avenue	\$1,204.22	25%	\$364.97	25%	\$364.97	25%	\$12,927.92	25%
05290	James E. Carver	North Wales: Sanctuary	\$6,865.20	30%	\$2,220.30	30%	\$2,299.80	30%	\$12,249.16	25%
05310	Robin M. Hynicka	Phila.: Arch Street	\$0.00	0%	\$0.00	0%	\$0.00	0%	\$0.00	0%
05330	A. R. Reddick	Phila.: Camphor Memorial	\$0.00	0%	\$0.00	0%	\$0.00	0%	\$1,331.04	4%
05340	Thomas E. Sligh	Phila.: Devereux Memorial	\$277.40	5%	\$179.40	10%	\$185.80	10%	\$2,816.68	8%
05360	Herbert N. Gibbons	Phila.: Emmanuel	\$1,545.20	20%	\$499.60	20%	\$517.60	20%	\$2,946.67	9%
05375	John Lewis	Phila.: Haven Peniel	\$2,871.00	20%	\$928.40	20%	\$89.70	2%	\$35.00	0%
05490	Donna L. Jones	Phila.: Cookman	\$0.00	0%	\$0.00	0%	\$0.00	0%	\$0.00	0%
05500	Reginald A. Monte	Phila.: Mid-Town Parish	\$479.40	30%	\$155.10	30%	\$160.50	30%	\$54.50	11%
05510	Thomas H. James	Phila.: Mount Zion	\$1,081.60	20%	\$174.90	10%	\$181.20	10%	\$4,658.63	15%
05520	Anthony A. Arrington	Phila.: Mother African Zoar	\$0.00	0%	\$186.00	10%	\$192.70	10%	\$3,281.93	20%
05620	Robert L. Johnson	Phila.: Simpson-Fletcher	\$0.00	0%	\$0.00	0%	\$0.00	0%	\$1,087.82	4%
05650	Allen G. Jenkins	Phila.: St. Luke's Snyder Avenue	\$0.00	0%	\$0.00	0%	\$0.00	0%	\$0.00	0%
05660	Allen G. Jenkins	Phila.: St. Barnabas-Bethsaida	\$0.00	0%	\$0.00	0%	\$0.00	0%	\$0.00	0%
05670	G. K. Gilson	Phila.: St. George's	\$570.00	30%	\$165.00	30%	\$165.00	30%	\$8,182.65	25%
05680	Michael Roberts	Phila.: Tioga	\$482.40	20%	\$156.00	20%	\$161.60	20%	\$4,916.79	17%
05690	Thomas A. Jackmon	Phila.: Tindley Temple	\$723.60	10%	\$234.00	10%	\$242.40	10%	\$2,865.13	8%
05740	Sunil Balasundaram	Radnor	\$892.40	20%	\$288.60	20%	\$299.00	20%	\$3,157.32	17%
07275	Robb Faller	Norristown: Open Arms	\$0.00	0%	\$0.00	0%	\$0.00	0%	\$0.00	0%
31425	John V. Bhajjan	Havertown: Hope	\$900.00	30%	\$1,200.00	30%	\$900.00	30%	\$10,319.03	25%
			<b>\$159,682.93</b>	<b>23%</b>	<b>\$51,794.43</b>	<b>23%</b>	<b>\$51,787.62</b>	<b>23%</b>	<b>\$473,757.26</b>	<b>21%</b>

*\*Other = Direct billing, property ins., workers comp., MPP, CPP, clergy ins., lay ins., vehicle ins., clergy ins., clergy ins. contr.*

## East District

### Rev. Michele Bartlow, District Superintendent

		Connection Ministry Fund 2005 Payment	% Paid	World Services Payment	% Paid	General Church 2005 Payment	% Paid	Others* 2005 Payment	% Paid
Tracy L. Bass	Phila.: Kensington "Old Brick"	\$0.00	0%	\$0.00	0%	\$0.00	0%	\$0.00	0%
William Wolfe	Phila.: St. Philip's	\$324.00	30%	\$72.00	30%	\$144.00	30%	\$2,939.83	27%
Melvin F. Bell	Phila.: Simpson Memorial	\$1,688.01	25%	\$31.26	25%	\$369.99	25%	\$9,646.34	25%
Daniel P. Roth	Phila.: Summerfield/Siloam	\$1,619.21	100%	\$1,244.66	100%			\$6,041.70	17%
Lorenza Williams Jr.	Phila.: Falls							\$0.00	0%
Sandra F. Dufresne	Phila.: Green Lane	\$2,499.00	28%					\$11,770.66	25%
Andrew Krpata	Phila.: Roxborough, Ridge	\$1,500.40	20%	\$511.80	20%	\$496.80	20%	\$5,303.62	17%
Sukja Bang	Ambler: Calvary	\$2,226.24	25%	\$521.25	25%	\$103.74	25%	\$8,338.73	25%
Debra C. Stanton	Bensalem	\$3,906.00	30%	\$597.00	30%	\$597.00	30%	\$10,418.86	25%
Myung H. Cha	Bensalem: Korean UMC	\$0.00	0%	\$0.00	0%	\$0.00	0%	\$2,852.20	24%
Bonniekaren Mullen-Holtz	Bristol: First	\$643.51	20%	\$222.31	20%	\$304.20	21%	\$4,541.26	25%
Thomas Brooks	Bristol: Harriman	\$357.50	16%	\$149.80	20%	\$153.00	20%	\$5,049.83	18%
Charles A. Green	Chalfont	\$380.10	30%	\$63.90	30%	\$63.90	30%	\$5,875.25	25%
Gregory K. Gilmore-Clough	Cheltenham	\$600.00	30%	\$37.50	30%	\$37.50	30%	\$6,487.05	22%
Charles R. Mudie	Cornwells Heights	\$1,230.00	30%	\$648.00	30%	\$276.00	30%	\$2,060.00	25%
Cynthia E. Skripak	Croydon: Wilkinson Memorial	\$557.70	30%	\$103.20	30%	\$100.50	30%	\$2,374.77	25%
Michael A. Murphy	Doylestown	\$7,323.00	25%	\$2,322.00	25%	\$1,581.00	25%	\$19,099.00	27%
Robert L. Strauss	Fairless Hills: Christ	\$3,308.70	30%	\$1,124.40	30%	\$772.80	30%	\$8,645.89	25%
W. T. Bach	Fairless Hills: First	\$2,545.80	20%	\$636.40	20%	\$636.40	20%	\$4,933.59	17%
H. Malcolm Whiteman	Fallsington	\$673.20	30%	\$232.20	30%	\$237.30	30%	\$834.25	26%
Cynthia L. Brubaker	Glenside/Abington	\$1,183.34	17%	\$833.34	17%	\$350.00	17%	\$9,240.47	17%
Thomas C. Haugh	Hatboro: Lehman Memorial	\$4,633.60	10%	\$1,239.30	10%	\$1,234.20	10%	\$5,697.89	8%
Lorelei M. Bach	Hulmeville: Neshamony	\$246.40	20%	\$36.40	20%	\$23.20	20%	\$3,871.65	17%
Sherrin Marshall	Huntingdon Valley	\$3,086.00	18%	\$1,009.00	18%			\$8,502.41	23%
William M. Thompson	Ivyland: St. John's	\$10,788.30	30%	\$2,754.00	30%	\$2,831.40	30%	\$15,797.04	25%
Gary L. Nicholson	Jarrettown	\$7,859.10	30%	\$2,522.10	30%	\$1,348.80	30%	\$21,619.55	29%
Jay Newlin	Jenkintown	\$2,309.40	30%	\$796.50	30%	\$3,920.10	30%	\$9,251.82	25%
Roy Lewis	Lahaska	\$701.70	30%	\$205.20	30%	\$209.40	30%	\$1,372.50	25%
John Lutz	Langhorne	\$3,850.80	30%	\$1,328.40	30%	\$1,357.20	30%	\$15,111.45	25%
Timothy A. Kriebel	Levittown: Emilie	\$6,834.90	30%	\$2,358.60	30%	\$2,409.60	30%	\$33,740.74	29%
Menno E. Good	Montgomery Square	\$1,392.60	30%	\$426.90	30%	\$426.90	30%	\$2,565.50	25%
Frank H. Sanders	Morrisville	\$2,356.40	20%	\$813.00	20%	\$830.60	20%	\$13,147.40	25%
James B. Todd	Solebury	\$3,079.20	30%	\$513.30	30%	\$513.30	30%	\$6,896.05	25%
David R. Cramp	Newtown	\$2,085.00	13%	\$2,187.00	30%	\$1,128.00	30%	\$10,203.09	25%
Virginia Miles	Penns Park	\$909.80	20%	\$303.00	20%	\$307.20	20%	\$3,655.72	17%
Narie L. Grayson	Phila.: Advocate-St. Stephen's	\$320.40	30%	\$40.50	30%	\$401.40	30%	\$199.00	2%
Mark Dricker	Phila.: Bethesda	\$150.00	30%	\$45.00	30%	\$90.00	30%	\$1,272.75	25%
Beverly T. Andrews	Phila.: Bridesburg	\$256.00	100%	\$0.00	0%	\$0.00	0%	\$1,536.53	18%
David W. Brown	Phila.: Bustleton	\$918.00	21%	\$224.40	22%	\$244.80	24%	\$5,246.40	17%
Harold E. Taussig	Phila.: Chestnut Hill	\$0.00	0%	\$0.00	0%	\$0.00	0%	\$0.00	0%
John L. Davidson	Phila.: Church Good Shepherd	\$1,020.85	19%	\$31.50	30%	\$31.50	30%	\$6,370.27	19%
David R. Carey	Phila.: Church of The Redeemer	\$0.00	0%	\$0.00	0%	\$0.00	0%	\$3,071.17	10%
Robert Randolph-Davis	Abundant Life Christian Center	\$0.00	0%	\$0.00	0%	\$0.00	0%	\$0.00	0%
Randy M. Brubaker	Phila.: Crescentville	\$200.00	5%	\$100.00	14%	\$100.00	17%	\$3,671.07	21%
Stanley J. Krall	Phila.: Fox Chase	\$1,572.00	20%	\$91.20	20%	\$89.20	20%	\$7,352.60	17%
Catherine Bowers	Phila.: Frankford Group Ministry							\$0.00	0%
Dustin D. Petz	Phila.: FGM: Central	\$102.80	10%	\$34.80	10%	\$36.50	10%	\$396.69	8%
Laurie A. Rookard	Phila.: FGM: Frankford Memorial	\$2,264.40	30%	\$795.60	30%	\$795.60	30%	\$11,609.62	31%
Dustin D. Petz	Phila.: FGM: Rehoboth							\$0.00	0%
Mary Elum	Phila.: FGM: St. Thomas	\$0.00	0%	\$0.00	0%	\$0.00	0%	\$0.00	0%
Carl H. Doerr	Phila.: Holmesburg	\$291.66	8%	\$400.00	100%	\$100.00	100%	\$2,422.44	8%
Richard H. Andrews	Phila.: Johnson Memorial	\$2,135.10	30%	\$735.90	30%	\$751.50	30%	\$10,236.03	25%
Mandy L. Stanley	Phila.: Juniata Park	\$489.60	30%	\$244.80	30%	\$244.80	30%	\$7,814.95	36%
Alfred T. Day	Phila.: Germantown, First	\$2,000.00	13%	\$666.66	13%	\$666.66	12%	\$20,016.76	17%
Ralph E. Blanks	Phila.: Janes Memorial	\$0.00	0%	\$0.00	0%	\$0.00	0%	\$10,546.97	20%
William G. George	Phila.: Grace	\$2,966.40	30%	\$667.20	30%	\$1,044.00	30%	\$9,784.47	25%
Jackie A. Stewart	Phila.: Bickley's New Beginning	\$100.00	39%	\$45.00	35%	\$40.00	31%	\$1,820.78	26%
Chul Park	Prospectville: First Korean	\$75.00	30%	\$37.50	30%	\$37.50	30%	\$3,650.83	14%
Esdras Seda	Phila.: LaResurreccion-Lindley	\$1,258.00	22%	\$516.00	28%	\$519.00	28%	\$7,460.00	25%
Cookie F. Bracey	Phila.: Mount Carmel	\$473.65	30%	\$28.00	30%	\$28.00	30%	\$7,854.17	25%
Margret M. Powell	Phila.: St. James	\$0.00	0%	\$0.00	0%	\$0.00	0%	\$0.00	0%
Frank H. Billman	Phila.: Somerton	\$2,132.60	20%	\$20.00	20%	\$20.00	20%	\$7,148.90	22%
Dustin D. Petz	Phila.: Tabernacle Memorial	\$0.00	0%	\$0.00	0%	\$0.00	0%	\$3,325.93	24%
Anna R. Steward	Phila.: Trinity (Baynton)	\$298.40	20%	\$100.00	20%	\$101.60	20%	\$1,055.82	17%
Beverly T. Andrews	Phila.: Wissinoming	\$0.00	0%	\$26.00	2%	\$0.00	0%	\$1,670.13	14%
Steven McComas	Pipersville: Rolling Hills	\$224.40	30%	\$77.40	30%	\$79.50	30%	\$2,786.58	26%
Alvan E. Outland	Prospectville	\$250.00	100%	\$125.00	100%	\$125.00	100%	\$843.00	100%
James L. Garner	Scottsville	\$3,927.60	30%	\$958.80	30%	\$987.30	30%	\$8,560.53	36%
Herbert Phillips Sr.	Trevoise	\$240.00	30%	\$150.00	30%	\$375.00	30%	\$2,531.50	25%
Gregory Holston	Trevoise: St. Matthew	\$1,106.40	30%	\$430.20	30%	\$367.20	30%	\$1,772.75	25%
Wendy Bellis	Warminster: St. Andrews	\$2,631.20	20%	\$520.40	20%	\$520.40	20%	\$3,903.86	17%
John Gudikunst	Warrington: St. Paul's	\$0.00	0%	\$0.00	0%	\$0.00	0%	\$5,568.95	15%
John S. McDermott	Washington Crossing	\$19,638.60	20%	\$10.00	10%	\$10.00	10%	\$18,761.06	17%
Daniel R. Ellis-Killian	Willow Grove	\$650.00	4%	\$650.00	13%	\$0.00	0%	\$10,892.63	22%
Maridel Whitmore	Yardley	\$1,675.80	20%	\$174.80	20%	\$174.80	20%	\$4,831.70	16%
Garfield Williams	Phila.: True Worship Memorial							\$0.00	0%
Lorelei M. Bach	Methodist Russian Mission	\$60.00	30%	\$15.00	30%	\$15.00	30%		
		<b>\$132,127.77</b>	<b>21%</b>	<b>\$33,805.38</b>	<b>24%</b>	<b>\$30,760.29</b>	<b>22%</b>	<b>\$473,872.95</b>	<b>20%</b>

\*Other = Direct billing, property ins., workers comp., MPP, CPP, clergy ins., lay ins., vehicle ins., clergy ins., clergy ins. contr.

## Northeast District

### Rev. Rodney Shearer, District Superintendent

			Connection Ministry Fund 2005 Payment	% Paid	World Services Payment	% Paid	General Church 2005 Payment	% Paid	Others* 2005 Payment	% Paid
02100	Dennis G. Keen	Black Creek	\$1,327.50	30%	\$450.00	30%	\$472.50	30%	\$7,591.77	26%
02120	Dennis G. Keen	Conyngham	\$869.10	30%	\$294.60	30%	\$309.30	30%	\$5,834.52	25%
02150	Lorelei K. Toombs	Drums: St. Paul's	\$1,029.60	20%	\$349.00	20%	\$366.40	20%	\$2,183.49	17%
02180	Connie K. Stiller	Freeland: Park	\$0.00	0%	\$0.00	0%	\$0.00	0%	\$0.00	0%
02215	Joanne Young	Hazleton Enlarged Ministry							\$536.91	25%
02220	Carol V. Lawfer	Hazleton: Diamond	\$0.00	0%	\$0.00	0%	\$0.00	0%	\$2,091.96	7%
02260	Myron Steele	Lattimer	\$299.40	30%	\$101.70	30%	\$106.50	30%	\$508.25	26%
02330	Joseph Healey	Nesquehoning: Meed's Memorial	\$648.00	30%	\$216.00	30%	\$216.00	30%	\$4,246.28	25%
02340	Joseph Healey	Jim Thorpe: Grace-St. Paul	\$450.00	30%	\$150.00	30%	\$150.00	30%	\$2,596.15	26%
02390	William T. Kreichbaum	Summit Hill	\$821.70	30%	\$278.70	30%	\$292.50	30%	\$952.75	26%
02680	Rodney E. Miller	Tamaqua: First	\$1,627.20	30%	\$551.70	30%	\$579.00	30%	\$11,185.60	40%
02750	William T. Kreichbaum	Coaldale	\$271.80	30%	\$92.10	30%	\$96.60	30%	\$523.25	26%
02770	Rodney E. Miller	Tamaqua: Salem	\$140.80	20%	\$47.80	20%	\$50.00	20%	\$975.50	18%
02780	Dawn Taylor-Storm	White Haven	\$1,499.70	30%	\$508.50	30%	\$533.70	30%	\$6,043.69	25%
02790	Amy Boock	Weatherly: Centenary	\$265.50	30%	\$90.00	30%	\$94.50	30%	\$1,660.47	31%
04010	Sandra A. Parsons	Ackermanville	\$1,995.00	30%	\$705.00	30%	\$600.00	30%	\$7,026.82	25%
04020	Melinda L. McKonly	Allentown: Asbury	\$9,656.66	17%	\$1,648.25	8%	\$690.75	8%	\$18,746.12	21%
04030	Gene K. Boyer	Allentown: Emmanuel	\$1,500.00	30%					\$5,003.15	25%
04040	Angel M. Lopez	Allentown: La Trinidad	\$0.00	0%	\$0.00	0%	\$0.00	0%	\$0.00	0%
04050	Connie Asquith	Allentown: Salem	\$2,857.80	30%	\$1,765.80	30%	\$1,790.40	30%	\$9,381.29	25%
04070	David Lee Ferguson	Analomink	\$665.60	40%	\$374.80	40%	\$372.80	40%	\$1,133.66	35%
04080	Christopher Schiavino	Cherry Lane	\$815.70	30%	\$354.90	30%	\$423.00	30%	\$5,677.53	25%
04090	Milton R. Hartenstine	Bangor: First	\$3,428.40	30%					\$10,272.61	34%
04110	Janet L. Brown	East Bangor	\$1,881.60	30%	\$661.80	30%	\$729.30	30%	\$5,274.45	25%
04120	Sandra Nash	Belfast: Wesley	\$500.40	30%	\$165.30	30%	\$172.20	30%	\$3,001.13	25%
04130	Sandra Nash	Wind Gap: First	\$0.00	0%	\$0.00	0%	\$0.00	0%	\$480.00	4%
04140	Edward J. Tucker	Bethlehem: Epworth	\$1,374.99	25%	\$549.99	25%	\$450.00	25%	\$6,995.28	38%
04150	YongHo Chun	Bethlehem: Fritz	\$1,880.00	20%	\$820.00	20%	\$590.00	20%	\$5,121.16	17%
04160	J. W. Lentz	Bethlehem: Korean	\$660.00	30%	\$390.00	30%	\$360.00	30%	\$5,722.65	25%
04170	John D. Inghram	Bethlehem: Wesley	\$2,730.00	10%	\$830.00	10%	\$920.00	10%	\$5,371.64	8%
04180	Burgess Lee Gordon Jr.	Blakeslee	\$1,200.00	40%	\$600.00	39%	\$600.00	52%	\$2,767.00	78%
04190	John D. Inghram	Bowmanstown: Faith Alive	\$2,580.90	30%	\$799.50	30%	\$828.30	30%	\$10,998.18	25%
04200	Russell E. Walters	Canadensis	\$1,050.00	30%	\$450.00	30%	\$450.00	30%	\$2,960.75	25%
04210	William Stelger	Catasauqua: Grace	\$922.74	25%	\$223.26	25%	\$204.00	25%	\$6,776.82	25%
04220	Kenneth A. Klingborg	Chapman Quarries	\$1,592.10	30%	\$617.70	30%	\$621.30	30%	\$5,123.26	25%
04230	Kenneth A. Klingborg	Bushkill	\$929.40	20%	\$276.80	20%	\$255.00	20%	\$4,385.67	42%
04240	Samuel Ramnit	Cherry Valley	\$186.60	30%	\$69.00	30%	\$75.30	30%	\$5,835.30	25%
04260	Edward C. Kimes	East Stroudsburg	\$5,725.92	27%	\$1,611.81	27%	\$1,907.46	27%	\$15,319.37	38%
04270	Thomas S. Robinson	Easton: Calvary	\$1,789.50	30%	\$555.60	30%	\$567.60	30%	\$8,310.31	25%
04280	Joseph Grasser	Easton: Christ	\$814.00	20%	\$343.20	20%	\$372.80	20%	\$2,375.81	17%
04290	David G. Goss	Easton: First	\$1,942.40	20%	\$879.20	20%	\$918.40	20%	\$5,500.57	17%
04300	David Felker	Effort	\$3,370.60	20%	\$901.40	20%	\$864.20	20%	\$4,575.20	17%
04320	Glenn Brown	Hellertown: St. Paul	\$1,353.60	30%	\$373.20	30%	\$210.90	30%	\$6,091.73	40%
04330	Michael S. Netznik	Springtown: Salem	\$1,786.20	30%	\$597.60	30%	\$550.50	30%	\$5,945.70	25%
04340	Alan J. Smith	Woxall: Tabor UMC	\$2,715.60	20%	\$784.40	20%	\$781.60	20%	\$5,926.44	17%
04350	James D. Anderman	Lehighon: Ebenezer	\$0.00	0%	\$0.00	0%	\$0.00	0%	\$0.00	0%
04360	Edward A. Unangst	McMichaels	\$492.30	30%	\$305.10	30%	\$240.00	30%	\$1,256.52	25%
04370	Joan C. Pacocha	Neola	\$570.00	20%	\$256.00	20%	\$235.00	20%	\$2,383.30	13%
04380	Catherine P. Horn	Moore Twp.: Covenant	\$3,846.60	30%	\$1,763.10	30%	\$1,831.50	30%	\$8,348.35	25%
04390	John E. Charnock	Mt. Pocono	\$3,580.80	30%	\$1,324.80	30%	\$1,362.00	30%	\$9,950.31	25%
04400	Barbara L. Housley	Mountainhome	\$1,978.31	21%	\$960.00	30%	\$882.00	30%	\$28,088.81	92%
04420	James D. Anderman	Palmerton: Salem	\$310.50	30%	\$49.50	30%	\$36.00	30%	\$6,241.84	25%
04430	Ronald McClincey	Danielsville: Salem	\$966.60	30%	\$425.10	30%	\$408.60	30%	\$2,159.53	25%
04440	James D. Anderman	Parryville	\$202.50	15%	\$75.00	15%	\$75.00	15%	\$766.25	25%
04450	Larry R. Mark	Pen Argyl: Grace	\$4,940.70	30%	\$1,709.40	30%	\$1,789.80	30%	\$15,037.06	25%
04460	Blaik J. Westhoff	Perkasie	\$4,080.00	30%	\$1,080.00	30%	\$1,290.00	30%	\$8,967.07	25%
04470	Gary L. Meekins	Pocono Lake	\$2,256.30	30%	\$876.60	30%	\$827.10	30%	\$7,115.63	25%
04480	Samuel Ramnit	Poplar Valley: Christ	\$400.00	20%	\$200.00	20%	\$180.00	20%	\$1,228.48	17%
04490	George R. Alt	Portland	\$263.00	20%	\$123.00	20%	\$119.00	20%	\$786.67	17%
04500	David T. Ryan	Quakertown	\$7,960.00	40%	\$2,400.00	40%	\$2,600.00	40%	\$13,310.07	33%
04510	Arthur B. Schirmer	Reeders	\$1,945.50	30%	\$183.90	30%	\$193.50	30%	\$7,231.33	25%
04520	Robert G. Argot	Richmond	\$1,244.70	30%	\$388.20	30%	\$342.00	30%	\$6,378.31	25%
04530	Brian C. Small	Saylorsburg: St. Peter's	\$1,204.20	30%	\$477.90	30%	\$501.60	30%	\$4,089.09	47%
04540	William A. Abrams	Slatedale: Salem	\$145.60	10%	\$83.30	10%	\$80.30	10%	\$1,078.25	25%
04550	Keith Bashore	Emerald: St. Peter's	\$600.00	30%					\$2,049.77	25%
04560	Robert R. Shank	Stroudsburg	\$1,000.00	5%	\$500.00	9%	\$500.00	9%	\$8,558.77	25%
04570	Carole A. Wood	Stroudsburg: Faith	\$1,436.40	30%	\$340.20	30%	\$387.30	30%	\$6,341.25	25%
04580	J. W. Pratt	Swiftwater	\$300.00	30%	\$150.00	30%	\$150.00	30%	\$2,790.14	20%
04590	J. W. Pratt	Paradise Valley: Keokee Chapel	\$345.00	16%	\$80.00	10%	\$80.00	10%	\$3,338.13	23%
04600	Edward L. Bean	Telford: Grace	\$2,127.00	17%	\$943.84	17%	\$1,020.16	17%	\$6,418.06	17%
04610	Thomas Daniel	Tobyhanna	\$1,438.80	30%	\$450.00	30%	\$450.00	30%	\$6,316.43	25%
04620	James E. Brashear	Wescosville: Bethany	\$18,450.00	30%	\$4,791.00	30%	\$3,399.00	30%	\$31,197.43	25%
04630	Drew A. Parsons	Wooddale	\$230.00	10%	\$120.00	10%	\$110.00	10%	\$1,139.07	15%
04640	Sharon Feuerstein	Zionsville: Salem	\$901.20	30%	\$415.80	30%	\$421.50	30%	\$2,857.12	25%
31424	Margaret Kropp	Audenried-Jeanesville	\$230.10	30%	\$78.00	30%	\$81.90	30%	\$1,140.67	26%
			<b>\$130,602.12</b>	<b>24%</b>	<b>\$41,028.35</b>	<b>24%</b>	<b>\$39,166.07</b>	<b>25%</b>	<b>\$425,593.90</b>	<b>25%</b>



\*Other = Direct billing, property ins., workers comp., MPP, CPP, clergy ins., lay ins., vehicle ins., clergy ins. contr.

## Northwest District

### Rev. Alfred Maloney, District Superintendent

			Connection Ministry Fund 2005 Payment	% Paid	World Services Payment	% Paid	General Church 2005 Payment	% Paid	Others* 2005 Payment	% Paid
01010	Steward E. Warner	Annville	\$4,899.60	30%	\$386.40	30%	\$1,815.00	30%	\$12,283.21	27%
01020	Kerry E. Leeper	Annville: Kauffman's	\$0.00	0%	\$0.00	0%	\$0.00	0%	\$1,200.00	35%
01030	J. T. Fisher	Avon: Zion	\$0.00	0%	\$0.00	0%	\$0.00	0%	\$2,874.99	9%
01040	Kerry E. Leeper	Bellegrove	\$826.00	20%	\$280.00	20%	\$294.00	20%	\$2,160.97	23%
01050	Verna Snavelly	Water Works	\$0.00	0%	\$0.00	0%	\$0.00	0%	\$0.00	0%
01060	Louis D. Hornberger	Berne: Salem-Berne	\$796.50	30%	\$270.00	30%	\$283.50	30%	\$5,744.43	25%
01090	John T. Truitt	Campbelltown	\$2,360.00	20%	\$800.00	20%	\$840.00	20%	\$10,107.25	25%
01120	Gary Jacobella	Cleona: Immanuel	\$4,607.10	30%	\$1,561.80	30%	\$1,639.80	30%	\$8,374.30	25%
01130	James E. Heath	Cornwall	\$5,652.00	30%	\$1,915.80	30%	\$2,011.80	30%	\$11,806.76	25%
01180	George C. Sackett	Fleetwood: Emmanuel	\$850.80	30%	\$288.30	30%	\$302.70	30%	\$1,155.50	25%
01190	Kenneth P. Bell	Fredericksburg	\$788.00	17%	\$268.00	17%	\$280.00	17%	\$5,919.04	17%
01220	Larry A. Frank	Hamburg: Bethany	\$2,672.70	30%	\$906.00	30%	\$951.30	30%	\$4,710.10	25%
01240	Millard Fisher	Indiantown Gap: Emmanuel	\$2,154.00	50%	\$438.90	30%	\$460.80	30%	\$7,022.24	25%
01260	Lloyd F. Speer	Jonestown	\$2,921.03	30%	\$414.00	30%	\$415.87	30%	\$7,809.42	25%
01265	Colleen G. Kristula	Blandon: Journey UMC							\$2,047.74	20%
01280	Robin G. Fisher	Lebanon: Bethany	\$1,948.74	25%	\$660.51	25%	\$693.51	25%	\$3,695.32	26%
01290	Ronald A. Waite	Lebanon: Church Good Shepherd	\$6,708.30	30%	\$2,274.00	30%	\$2,387.70	30%	\$10,894.43	28%
01300	Daniel G. Herner	Lebanon: Covenant	\$1,167.00	8%	\$400.00	10%	\$300.00	9%	\$10,564.16	23%
01310	Brian G. Albert	Lebanon: Ebenezer	\$718.50	30%	\$257.40	30%	\$249.30	30%	\$5,412.31	25%
01320	William Chrin	Lebanon: Hebron	\$1,466.66	17%	\$183.32	17%	\$183.32	17%	\$5,947.80	17%
01330	John A. Laughlin	Lebanon: Kochenderfer's	\$591.00	5%	\$878.58	20%	\$878.58	20%	\$12,627.52	17%
01345	Elena Ortiz	Lebanon: Iglesia Metodista	\$180.00	30%	\$60.00	30%	\$60.00	30%	\$4,902.43	25%
01360	John Q. Taylor	Lebanon: Mountville	\$354.00	30%	\$120.00	30%	\$126.00	30%	\$596.00	26%
01370	Samuel D. Fry	Lebanon: St. John's	\$1,382.37	30%	\$468.60	30%	\$492.00	30%	\$1,096.00	25%
01380	Thomas Steger	Lebanon: St. Luke's	\$1,371.60	30%	\$465.00	30%	\$488.40	30%	\$4,187.57	25%
01390	R. M. Young	Lebanon: Trinity	\$0.00	0%	\$0.00	0%	\$0.00	0%	\$9,334.60	21%
01400	Richard Rogers	Lickdale: Trinity	\$3,202.80	30%	\$1,085.70	30%	\$1,140.00	30%	\$7,802.45	25%
01440	Janet S. Steger	Mount Gretna	\$1,558.80	20%	\$528.20	20%	\$554.80	20%	\$4,115.59	17%
01450	John H. Lynch	Myerstown: Zion	\$3,186.00	30%	\$1,080.00	30%	\$1,134.00	30%	\$10,033.43	25%
01480	Daniel Hall	Ono	\$5,097.60	30%	\$1,728.00	30%	\$1,814.40	30%	\$10,288.72	25%
01490	Richard A. Clark	Palmyra: Bethany	\$1,270.50	30%	\$430.80	30%	\$452.10	30%	\$4,230.86	25%
01500	David P. Harris	Palmyra: First	\$6,900.90	30%	\$2,339.40	30%	\$2,456.10	30%	\$12,583.23	25%
01510	Douglas Smith	Palmyra: Gravel Hill	\$4,236.20	20%	\$1,436.00	20%	\$1,507.80	20%	\$5,389.80	17%
01620	Richard Hostetter	Rocherty	\$1,003.00	20%	\$340.00	20%	\$357.00	20%	\$1,578.32	17%
01650	Lawrence E. Richard	Shoemakersville: Salem	\$1,377.60	40%	\$472.50	50%	\$472.00	50%	\$3,273.06	28%
02010	Rose M. Marquardt	Aristes: Zion	\$470.11	30%	\$159.36	30%	\$167.33	30%	\$969.25	25%
02020	Barbara J. Welsh	Ash Grove	\$1,207.80	30%	\$409.50	30%	\$429.90	30%	\$1,183.25	25%
02030	Archie A. Passmore	Irish Valley	\$292.40	20%	\$99.00	20%	\$104.00	20%	\$657.83	17%
02040	Harry L. Clark	Ashland: First UMC/Presby.	\$110.00	37%	\$0.00	0%	\$0.00	0%	\$868.25	25%
02050	Nancy H. Ross	Girardville	\$88.50	30%	\$30.00	30%	\$31.50	30%	\$449.00	21%
02080	Bruce Nobel	Barnesville: Bethany	\$239.10	30%	\$81.00	30%	\$84.90	30%	\$940.89	26%
02090	Bruce Nobel	Quakake: Ebenezer	\$171.00	30%	\$28.50	30%	\$85.50	30%	\$462.25	26%
02110	Daniel Siddle	Clark's Grove	\$2,395.80	30%	\$133.20	30%	\$133.20	30%	\$6,208.89	25%
02130	Nancy A. Gehres	Cressona	\$57.48	27%	\$19.50	27%	\$18.77	25%	\$826.12	25%
02140	Nancy A. Gehres	Cumbola	\$93.00	30%	\$32.70	30%	\$33.00	30%	\$446.50	26%
02160	John T. Parker	Elysburg	\$1,781.07	25%	\$603.75	25%	\$633.96	25%	\$7,428.85	25%
02170	Nancy H. Ross	Frackville: First	\$2,279.76	30%	\$772.80	30%	\$811.44	30%	\$9,974.61	37%
02190	John Wallace	Gilberton	\$0.00	0%	\$0.00	0%	\$0.00	0%	\$0.00	0%
02200	John Wallace	Gordon: Simpson	\$848.40	25%	\$282.78	25%	\$282.78	25%	\$2,584.67	25%
02210	Joanne Young	Barry: Salem	\$685.00	26%	\$895.00	100%	\$895.00	100%	\$2,779.00	99%
02240	Joanne Young	Kulpmont	\$663.75	30%	\$225.00	30%	\$236.25	30%	\$624.00	26%
02250	Alvin A. Reese	Landingville: Welcome	\$822.34	30%	\$278.76	30%	\$292.70	30%	\$1,171.00	25%
02270	David Alderson	Lewistown: Calvary Evangelical	\$885.00	30%	\$300.00	30%	\$315.00	30%	\$1,882.20	25%
02280	Salim Khan	Mahanoy City: First	\$1,955.67	30%	\$662.85	30%	\$696.09	30%	\$5,893.45	25%
02290	Emlyn Jones	Minersville	\$88.50	20%	\$30.00	20%	\$31.50	20%	\$1,040.00	17%
02300	Fred Valent	Llewellyn	\$88.50	30%	\$30.00	30%	\$31.50	30%	\$795.00	25%
02320	James McNair	Mount Carmel: First	\$519.20	20%	\$176.00	20%	\$184.80	20%	\$5,439.74	17%
02350	Charles Englehart	Nuremberg: Bethany	\$123.90	30%	\$42.00	30%	\$44.10	30%	\$1,026.50	25%
02360	Timothy J. Patterson	Orwigsburg: Salem	\$354.00	20%	\$120.00	20%	\$126.00	20%	\$4,244.92	17%
02400	Ira Lydic	Pine Grove: St. Paul	\$1,150.50	30%	\$390.00	30%	\$409.50	30%	\$2,839.33	25%
02410	Ira Lydic	Donaldson	\$282.00	30%	\$95.40	30%	\$100.20	30%	\$485.00	26%
02420	Lorraine Heckman	Port Carbon: First	\$531.00	30%	\$180.00	30%	\$189.00	30%	\$1,710.25	25%
02430	Margaret Kropp	Port Carbon: Grace	\$177.00	20%	\$60.00	20%	\$63.00	20%	\$575.18	13%
02440	Margaret A. Reed	New Philadelphia	\$106.20	20%	\$0.00	0%	\$0.00	0%	\$84.00	3%
02450	Bonnie Yeager	Pottsville: Evangelical	\$623.04	30%	\$211.20	30%	\$221.76	30%	\$2,793.95	21%
02460	W. S. Ostman	Pottsville: First	\$5,007.00	30%	\$1,697.40	30%	\$1,782.00	30%	\$9,697.41	21%
02470	Christopher Wollyung	Ringtown: Aurand Memorial	\$609.60	30%	\$206.70	30%	\$216.90	30%	\$2,062.64	25%
02480	John Kropp	St. Clair-Wade	\$531.00	30%	\$180.00	30%	\$189.00	30%	\$1,950.75	25%
02510	James Fryer	Drehersville: Salem	\$584.70	30%	\$198.30	30%	\$208.20	30%	\$506.75	19%
02520	James Fryer	New Ringgold: Zion	\$531.00	100%	\$180.00	100%	\$189.00	100%	\$2,404.99	75%
02530	Garry Snyder	Reynolds: Zion's	\$0.00	0%	\$184.20	30%	\$0.00	0%	\$310.75	27%
02540	Garry Snyder	West Penn: Immanuel	\$168.15	30%	\$57.00	30%	\$59.85	30%	\$628.25	26%
02550	Susan A. Wollyung	Schuylkill Haven: Covenant	\$283.20	30%	\$96.00	30%	\$100.80	30%	\$1,393.76	25%
02560	Albert Mosley	Schuylkill Haven: First	\$4,416.86	30%	\$1,497.24	30%	\$1,572.10	30%	\$8,641.85	36%
02580	Timothy R. Reichard	Johnston City: Ranshaw	\$514.80	30%	\$174.54	30%	\$183.30	30%	\$620.75	26%
02590	Timothy R. Reichard	Shamokin: First	\$575.30	11%	\$0.00	0%	\$0.00	0%	\$2,836.72	12%
02620	Betty A. Ford	Shamokin: Emmanuel	\$617.87	28%	\$209.42	28%	\$219.90	28%	\$1,403.33	24%
02630	Nelson Alleman	Oak Grove	\$1,020.00	30%	\$0.00	0%	\$0.00	0%	\$1,615.25	25%
02640	Betty A. Ford	Shamokin: Zion	\$900.00	30%	\$180.00	30%	\$189.00	30%	\$615.25	26%
02650	Richard E. Wilcock	Shamokin: St. John's	\$750.00	30%					\$9,437.93	25%
02660	David Seymour	Shenandoah: First	\$0.00	0%	\$0.00	0%	\$0.00	0%	\$0.00	0%
02670	David Seymour	William Penn	\$76.00	20%	\$25.80	20%	\$27.00	20%	\$406.83	18%
02700	Donald Boyd	Joliett-First	\$393.90	30%	\$133.50	30%	\$140.10	30%	\$673.00	26%
02710	Donald Boyd	Tremont: St. John's	\$598.80	30%	\$203.10	30%	\$213.00	30%	\$1,002.00	25%
02720	Kathryn Painter	Trevorton	\$1,062.00	30%	\$360.00	30%	\$378.00	30%	\$6,622.61	29%
02730	Coryn E. Beck	Millers Crossroads	\$516.25	25%	\$175.00	25%	\$183.75	25%	\$4,460.40	25%
02800	Rose M. Marquardt	Wilburton	\$84.60	30%	\$28.80	30%	\$30.00	30%	\$378.50	25%
02810	Christopher Wollyung	Zion Grove: Davis Chapel	\$168.00	30%	\$57.00	30%	\$60.00	30%	\$440.50	26%
			<b>\$110,748.35</b>	<b>25%</b>	<b>\$34,929.51</b>	<b>25%</b>	<b>\$37,636.36</b>	<b>25%</b>	<b>\$336,263.65</b>	<b>23%</b>

\*Other = Direct billing, property ins., workers comp., MPP CPP, clergy ins., lay ins., vehicle ins., clergy ins. contr.

## Southeast District

### Rev. Susan May, District Superintendent

			Connection Ministry Fund 2005 Payment	% Paid	World Services Payment	% Paid	General Church 2005 Payment	% Paid	Others* 2005 Payment	% Paid
03010	Kenneth Hall	Avondale	\$903.30	30%	\$312.30	30%	\$302.40	30%	\$1,595.86	25%
03040	Edward C. Goodley	Booth's Corner: Siloam	\$150.00	30%	\$100.00	40%	\$100.00	40%	\$7,516.20	25%
03050	Jesse A. Coale	Broomall: Christ	\$1,200.00	30%	\$450.00	30%	\$450.00	30%	\$4,040.15	26%
03060	John C. Nesbitt	Broomall: St. Mark's	\$3,236.00	20%	\$1,120.00	20%	\$1,084.00	20%	\$10,078.51	23%
03080	Robert A. Crane	Chatham	\$831.90	30%	\$287.70	30%	\$278.40	30%	\$1,432.74	25%
03090	Andrew L. Foster	Chester: Grace Community	\$400.00	20%	\$100.00	20%	\$100.00	20%	\$3,900.39	16%
03100	Harry Benson	Chester: Siloam	\$292.60	10%	\$107.40	10%	\$100.00	10%	\$204.38	7%
03110	Herbert W. Coe	Chester: St. Daniel's	\$1,272.60	10%	\$439.90	10%	\$425.90	10%	\$5,271.66	13%
03120	Karen E. Jones	Chester: Trinity	\$0.00	0%	\$0.00	0%	\$0.00	0%	\$5,295.93	28%
03140	Edgar W. Donnon	Pomeroy	\$691.00	20%	\$236.60	20%	\$229.40	20%	\$1,067.32	17%
03150	H. J. Tyson	Coatesville: Olivet	\$8,658.55	35%					\$13,925.13	25%
03160	Heidi Silliman	Cochranville	\$1,806.60	30%	\$624.30	30%	\$604.80	30%	\$6,949.07	26%
03165	Thomas Hall	Crossroads, A UMC Congregation							\$2,438.24	26%
03170	Dorothy M. Field	Crozerville	\$607.50	30%	\$222.60	30%	\$207.30	30%	\$1,081.50	25%
03180	Charles E. Weigel	Downingtown	\$3,964.60	20%	\$1,168.70	19%	\$1,168.70	19%	\$6,220.58	17%
03190	Christina Keller	Eddystone	\$0.00	0%	\$0.00	0%	\$0.00	0%	\$1,221.58	14%
03210	Clyde S. Flaherty	Elam	\$4,000.00	20%	\$1,000.00	20%	\$1,000.00	20%	\$9,420.73	17%
03225	Cynthia Hall	Faith Community	\$508.80	20%	\$175.20	20%	\$179.60	20%	\$1,468.49	17%
03230	Kurt W. Schenk	Fremont: Union	\$429.60	30%	\$157.80	30%	\$147.00	30%	\$1,241.25	25%
03240	Joseph L. Wenrich	Friendship	\$1,053.30	30%	\$386.70	30%	\$360.00	30%	\$6,561.61	24%
03250	Barbara Emery	Glen Moore	\$1,560.00	30%	\$607.50	30%	\$532.50	30%	\$3,542.30	32%
03260	June Humpton	Gradyville	\$202.66	27%	\$85.34	27%	\$85.34	27%	\$1,375.18	25%
03270	John T. Wright	Grove	\$7,595.01	25%	\$2,540.00	25%	\$2,412.50	25%	\$21,261.84	25%
03280	Jimmy Montgomery	Hamorton	\$900.00	30%	\$300.00	30%	\$300.00	30%	\$1,345.76	25%
03290	David McMillan	Hibernia	\$1,453.20	30%	\$533.40	30%	\$497.40	30%	\$7,265.10	25%
03310	Steven C. Morton	Hopewell	\$16,200.00	30%	\$4,800.00	30%	\$4,800.00	30%	\$24,567.22	29%
03315	Anita A. Powell	Kennett: Church of the Open Door	\$930.00	30%	\$600.00	30%	\$300.00	30%	\$3,869.02	25%
03320	David P. Bergstrom	Kemblesville	\$2,935.80	30%	\$1,013.70	30%	\$1,014.00	30%	\$7,628.05	25%
03330	Efrain Diaz	West Grove: Cristo Rey	\$0.00	0%	\$0.00	0%	\$0.00	0%	\$385.46	2%
03340	Sharon Paul	Landenberg	\$1,142.88	25%	\$419.55	25%	\$390.84	25%	\$2,755.40	25%
03350	James R. Hallam	Lima	\$6,816.00	25%	\$2,000.00	25%	\$1,447.00	25%	\$13,244.48	25%
03360	V. J. Durban	Linwood Heights	\$0.00	0%	\$0.00	0%	\$0.00	0%	\$5,381.67	15%
03380	Joan H. Trout	Lionville: Church Resurrection	\$2,700.00	30%	\$600.00	30%	\$436.20	62%	\$10,584.58	25%
03390	Eric D. Ressler	Nantmeal	\$521.05	28%	\$150.45	28%	\$150.17	28%	\$1,285.79	24%
03410	Sandra Cislo	Marcus Hook: Cokesbury	\$531.90	30%	\$183.90	30%	\$177.90	30%	\$1,993.25	25%
03420	Nancy Guenther	Marshallton	\$3,041.40	30%	\$1,116.60	30%	\$1,040.10	30%	\$4,131.50	30%
03430	Linda W. George	Romansville	\$1,005.61	26%	\$491.61	36%	\$482.81	37%	\$1,843.33	25%
03440	Janet K. Hess	Media: First	\$4,002.30	30%	\$1,170.00	30%	\$1,110.00	30%	\$10,297.36	33%
03450	Zabdiel Y. Khan	Middletown: Christ	\$1,084.00	27%	\$271.00	27%	\$239.00	26%	\$7,193.20	25%
03470	Thomas C. McGill	Mount Hope	\$7,021.20	30%	\$2,577.60	30%	\$2,401.20	30%	\$19,549.52	26%
03480	Gwinyai Muzorewa	New London	\$1,031.70	30%	\$356.40	30%	\$345.30	30%	\$1,359.60	33%
03490	Benjamin T. Taylor	Oxford	\$536.55	6%	\$394.00	12%	\$412.00	13%	\$5,901.64	17%
03510	Mark Beideman	Parkesburg	\$1,494.90	30%	\$548.70	30%	\$511.20	30%	\$2,902.57	25%
03520	Amy Emmett	Parkside	\$678.80	39%	\$249.20	39%	\$232.20	39%	\$6,818.89	36%
03540	James T. Ford	Trainer: Price Street	\$215.70	30%	\$69.30	30%	\$65.40	30%	\$348.25	26%
03560	Ernest Fisher	South Media: Packard Memorial	\$100.00	44%	\$127.00	50%	\$30.00	100%	\$813.00	22%
03580	Russell J. Atkinson	Swarthmore	\$2,296.70	24%	\$0.00	0%	\$100.00	4%	\$6,613.65	17%
03590	Thomas C. Davis-Shappell	Thorndale	\$2,160.00	30%	\$720.00	30%	\$720.00	30%	\$9,906.29	25%
03600	Jon E. Swenson	Thornton: Bethlehem	\$5,102.40	16%	\$1,757.70	15%	\$1,637.40	15%	\$21,012.63	25%
03610	James T. Ford	Trainer	\$1,389.60	30%	\$510.30	30%	\$475.20	30%	\$3,818.14	25%
03640	John Pritchard	Wallingford: Old Union	\$258.75	25%	\$212.52	25%	\$106.26	25%	\$2,754.32	25%
03660	Truman T. Brooks	West Chester	\$10,947.00	25%	\$3,892.50	25%	\$3,911.01	25%	\$21,173.81	28%
03665	Evodia Villalva	West Chester: El Buen Samaritano							\$346.89	9%
03670	Alice M. Cook	West Grove	\$3,765.00	30%	\$1,382.10	30%	\$1,287.60	30%	\$8,365.14	25%
03680	Drena L. Miller	Willistown	\$1,793.10	30%	\$613.20	30%	\$593.70	30%	\$7,592.88	25%
05050	Kenneth E. Gelzhiser	Clifton Heights	\$500.00	100%	\$250.00	100%	\$250.00	100%	\$6,054.83	22%
05060	Gregor G. Woodruff	Collingdale: Mariner's	\$220.50	10%	\$81.00	10%	\$75.40	10%	\$929.44	17%
05090	Whymon Simmons	Darby: Mt. Zion	\$285.00	30%	\$94.50	30%	\$91.20	30%	\$2,120.81	25%
05100	David J. Davis	Phila.: Clearview	\$345.00	30%	\$48.00	30%	\$48.00	30%	\$1,979.79	25%
05110	Jerald Goodwin	Darby: Union Memorial	\$680.00	28%	\$300.00	30%	\$300.00	30%	\$1,366.51	25%
05120	Paul A. Gutknecht	Drexel Hill	\$2,250.00	25%	\$375.00	25%	\$375.00	25%	\$6,090.28	11%
05170	Chongseok Kim	Drexel Hill: New Covenant	\$0.00	0%	\$0.00	0%	\$0.00	0%	\$0.00	0%
05245	Timothy S. Thomson-Hohl	Lansdowne: Trinity Lansdowne	\$807.30	30%	\$275.40	30%	\$267.30	30%	\$8,460.79	25%
05250	Julia Bright	Morton: Kedron	\$360.00	15%	\$120.00	15%	\$120.00	34%	\$668.83	17%
05300	Neil Gutmaker	Norwood	\$444.18	17%	\$120.00	17%	\$120.00	17%	\$4,187.18	16%
05320	Raymond Mitchell	Phila.: Berry-Long Memorial	\$0.00	0%	\$0.00	0%	\$0.00	0%	\$0.00	0%
05350	Helen S. Fleming	Phila.: Eastwick	\$25.00	0%	\$0.00	0%	\$0.00	0%	\$0.00	0%
05610	CLOSED	Phila.: Sayers Memorial	\$850.50	10%	\$312.20	10%	\$290.80	10%	\$1,740.20	10%
05700	Gertrude M. Duckett	Phila.: Univer. City, Calvary	\$368.60	20%	\$135.40	20%	\$126.00	20%	\$4,690.92	17%
05710	Joy Bagwell	Phila.: Wharton-Wesley	\$473.00	10%	\$0.00	0%	\$0.00	0%	\$2,766.45	15%
05730	Robert S. Booker	Prospect Park: Prospect	\$922.50	25%	\$307.50	25%	\$307.50	25%	\$7,860.61	24%
05750	Gerard M. McGrath	Ridley Park	\$1,468.70	31%	\$587.60	34%	\$552.70	35%	\$6,923.57	21%
05760	Alice A. Bonham	Springfield: C.C. Hancock	\$789.90	30%	\$290.06	30%	\$270.00	30%	\$5,388.76	25%
05770	Annette M. Bolts	Springfield: Covenant	\$10,959.60	30%	\$3,798.30	30%	\$3,692.10	30%	\$20,582.12	25%
05795	Sharon L. Vandegrift	Upper Darby: New Life	\$0.00	0%	\$0.00	0%	\$0.00	0%	\$0.00	0%
31415	Evelyn K. Clark	Sharon Hill Christian Center							\$0.00	0%
			<b>\$143,169.34</b>	<b>24%</b>	<b>\$44,277.73</b>	<b>24%</b>	<b>\$41,867.73</b>	<b>24%</b>	<b>\$421,970.12</b>	<b>22%</b>

*\*Other = Direct billing, property ins., workers comp., MPP, CPP, clergy ins., lay ins., vehicle ins., clerical ins., clergy ins. contr.*

## Southwest District

### Rev. Robert Hoffman, District Superintendent

			Connection Ministry Fund 2005 Payment	% Paid	World Services Payment	% Paid	General Church 2005 Payment	% Paid	Others* 2005 Payment	% Paid
01110	Dennis R. Emrick	Churchtown	\$1,309.14	30%	\$580.23	30%	\$210.63	30%	\$2,526.95	26%
01250	Frank Schaefer	Iona	\$2,100.00	30%					\$8,403.99	25%
01270	Robert L. Nissly	Kleinfeltersville: Trinity	\$729.38	30%	\$323.27	30%	\$117.35	30%	\$1,500.74	25%
01630	Mary Ellen B. Beckman	Schaefferstown: Zion	\$0.00	0%	\$0.00	0%	\$0.00	0%	\$1,916.66	9%
01640	Robert A. Stippich	Schoeneck: Wiest Memorial	\$1,031.60	30%	\$457.22	30%	\$165.98	30%	\$2,157.97	25%
06010	Gary L. Smith	Akron: Mt. Zion	\$249.36	20%	\$110.52	20%	\$40.00	20%	\$1,235.34	17%
06040	Charles E. Marshall	Bainbridge: Ludwig	\$2,159.52	67%	\$373.69	26%	\$187.78	36%	\$3,787.43	17%
06050	Terry Mills	Bethesda	\$1,496.16	30%	\$663.12	30%	\$240.90	30%	\$6,487.23	25%
06060	Debra Davis	Bird-in-Hand	\$972.51	30%	\$431.04	30%	\$156.30	30%	\$7,212.57	25%
06070	Dennis E. Spangler	Brownstown: Emmanuel	\$1,319.99	20%	\$585.04	20%	\$212.38	20%	\$4,727.20	17%
06080	Fred R. Landis	Brunnerville	\$0.00	0%	\$0.00	0%	\$0.00	0%	\$7,277.32	25%
06090	Randolph Smith	Christiana	\$930.00	30%	\$292.50	30%	\$292.50	30%	\$7,019.73	25%
06100	Thomas A. Weeple	Clearfield	\$710.68	30%	\$314.98	30%	\$114.34	30%	\$947.00	26%
06110	James A. Goudie	Colemanville	\$2,883.30	30%	\$914.70	30%	\$852.00	30%	\$7,158.36	25%
06120	Jeffrey A. Snyder	Columbia	\$2,460.00	20%	\$820.00	20%	\$820.00	20%	\$7,250.61	17%
06125	Jose Ayala	Columbia Area Latino Ministry							\$1,343.33	16%
06130	Jeannine Brenner	Conestoga	\$709.60	20%	\$311.20	20%	\$239.20	20%	\$4,242.09	17%
06140	Dori H. Wilcox	Denver: Trinity	\$1,795.39	27%	\$795.74	27%	\$288.86	27%	\$4,275.16	24%
06150	John B. Davis	Elizabethtown: St. Paul's	\$10,507.74	25%	\$3,102.75	25%	\$467.40	30%	\$20,997.81	25%
06160	Timothy A. Heitz	Ephrata: First	\$7,727.40	30%	\$2,535.30	30%	\$2,486.40	30%	\$13,746.04	25%
06170	Mary J. Kirby	Ephrata: Hope	\$1,092.10	7%	\$2,072.25	30%	\$752.10	30%	\$7,494.95	25%
06180	Charles E. Marshall	Falmouth	\$617.17	30%	\$273.54	30%	\$99.30	30%	\$990.50	25%
06190	Michael S. Remel	Georgetown	\$420.68	32%	\$414.07	31%	\$110.24	31%	\$2,671.86	11%
06200	Michael S. Remel	Mount Pleasant	\$0.00	0%	\$0.00	0%	\$0.00	0%	\$0.00	0%
06210	Marjorie A. Harris	Green Hill	\$1,060.60	20%	\$155.00	20%	\$144.40	20%	\$1,047.82	17%
06220	Thomas W. Fries	Hempfield	\$22,927.50	30%	\$13,374.30	30%	\$1,198.20	30%	\$19,932.54	25%
06230	John R. Miller	Highville	\$324.17	20%	\$143.68	20%	\$52.16	20%	\$549.66	17%
06240	Dennis R. Snovel	Hopeland	\$2,618.28	30%	\$1,160.46	30%	\$421.26	30%	\$12,172.72	39%
06250	Tomas A. Iraheta	Intercourse	\$1,118.40	30%	\$106.50	30%	\$106.50	30%	\$1,039.75	25%
06260	Timothy J. Smith	Ironville	\$2,260.80	30%	\$380.10	30%	\$380.10	30%	\$7,543.12	25%
06270	David C. Nissly	Lampeter	\$4,804.50	30%	\$1,025.70	30%	\$1,025.70	30%	\$6,596.30	17%
06275	Jody B. Sambrick	Living Waters Christian Fellowship	\$375.00	30%	\$375.00	30%	\$120.00	10%	\$4,890.45	25%
06280	Lawrence J. Whitehouse	Lancaster: Christ	\$760.00	20%	\$199.70	11%	\$238.71	20%	\$4,066.94	15%
06290	Bernard J. Kefer	Lancaster: Community	\$1,483.69	20%	\$657.59	20%	\$953.01	25%	\$5,001.45	17%
06300	Frank A. Nickel Jr.	Lancaster: Covenant	\$5,922.30	25%	\$2,624.85	25%	\$453.30	30%	\$12,334.25	25%
06310	Wanda Santos-Perez	Lancaster: El Redentor	\$1,329.00	30%	\$467.70	30%	\$5,500.03	25%	\$830.50	26%
06320	Kent E. Kroehler	Lancaster: First	\$17,500.03	25%	\$5,749.97	25%	\$2,327.10	30%	\$18,609.34	24%
06330	Michael I. Alleman	Lancaster: Grandview	\$9,364.20	30%	\$2,498.70	30%	\$265.66	17%	\$11,790.64	25%
06340	Robert A. Bailey	Lancaster: Otterbein	\$793.50	17%	\$274.16	17%	\$0.00	0%	\$6,748.61	11%
06350	Debra Hebden	Lancaster: Pearl Street	\$0.00	0%	\$0.00	0%	\$240.90	30%	\$7,170.51	25%
06360	Roseann Goldberg	Lancaster: Ross Street	\$1,496.16	30%	\$663.12	30%	\$33.06	6%	\$6,704.53	25%
06370	John G. Smith	Lancaster: St. Paul's	\$205.72	6%	\$91.18	6%	\$1,260.00	30%	\$7,328.34	12%
06380	Steven W. Rodgers	Leola	\$4,150.80	30%	\$1,335.60	30%	\$94.66	30%	\$7,495.40	25%
06390	Keith D. Price	Limeville	\$588.36	30%	\$260.77	30%	\$1,113.33	30%	\$6,948.85	25%
06400	Harry L. Kaufhold	Lititz	\$6,919.74	30%	\$3,066.93	30%	\$630.00	10%	\$16,086.37	25%
06410	Robert C. Timlin	Manheim: Ruhls	\$2,010.00	10%	\$360.00	10%	\$150.40	10%	\$15,345.46	23%
06420	Richard W. Conner	Manheim: Salem	\$1,870.20	20%	\$414.45	10%	\$82.25	10%	\$12,196.21	22%
06430	Bruce Lefever	Manheim Township: Faith	\$511.19	10%	\$226.57	10%	\$215.40	30%	\$3,891.98	17%
06440	Susan Sliker	Marticville	\$633.30	30%	\$231.30	30%	\$80.24	20%	\$1,324.56	25%
06450	Allan T. Summerfield	Rawlinsville	\$498.72	20%	\$221.04	20%	\$614.00	27%	\$769.33	17%
06460	Steven Taylor	Millersville: First	\$1,760.00	27%	\$720.00	27%	\$948.00	30%	\$9,111.15	25%
06470	Barry A. Wolfe	Millersville: Grace	\$5,891.13	30%	\$2,611.04	30%	\$150.30	30%	\$11,212.47	25%
06480	D. D. Woomer	Milton Grove	\$935.10	30%	\$414.45	30%	\$480.00	30%	\$1,494.50	26%
06490	Michael S. Miller	Mount Hope	\$960.00	30%					\$1,831.00	25%
06500	Paul L. Shumate	Mount Joy: Chiques	\$2,867.64	20%	\$1,270.98	20%	\$461.38	20%	\$6,282.22	25%
06510	Kenneth H. O'Neal	Mount Joy: Glossbrenner	\$3,921.00	25%	\$1,209.00	25%	\$1,125.00	25%	\$13,978.04	26%
06520	David E. Woolverton	Mount Joy: St. Mark's	\$8,400.00	30%	\$1,500.00	30%	\$2,700.00	30%	\$14,747.98	25%
06530	Lee F. Michaels	Mount Nebo	\$1,028.61	30%	\$455.90	30%	\$165.30	30%	\$2,351.50	31%
06540	John Cordes	Mountville: St. Paul's	\$685.74	10%	\$304.00	10%	\$110.33	10%	\$6,373.25	18%
06550	David Fulmer	Narvon: Mt. Zion	\$1,159.52	30%	\$513.92	30%	\$186.56	30%	\$2,760.75	25%
06560	David P. Unangst	Neffsville: Long Memorial	\$6,279.00	30%	\$1,440.00	30%	\$1,341.00	30%	\$11,554.92	25%
06570	Daniel E. Unrath	New Holland: New Holland	\$450.00	10%	\$165.00	10%	\$155.00	10%	\$3,118.27	8%
06580	Eric S. Ritz	New Holland: Evangelical	\$6,031.21	30%	\$2,673.12	30%	\$970.37	30%	\$14,300.60	25%
06590	Kevin E. Readman	New Holland: Ranck's	\$1,754.97	34%	\$1,187.19	53%	\$246.11	30%	\$7,955.49	25%
06600	Edward E. Barlow	Newtown	\$815.10	30%	\$144.90	30%	\$135.00	30%	\$671.75	26%
06610	John N. Roberts	Oregon	\$0.00	0%	\$0.00	0%	\$37.50	30%	\$388.50	19%
06620	Joseph Puckhaber	Paradise: St. John's	\$600.00	10%	\$200.00	10%	\$200.00	10%	\$3,060.70	8%
06630	Cheryl Zegers	Peach Bottom: Mt. Zion	\$446.40	30%	\$281.40	30%	\$262.20	30%	\$1,295.50	25%
06640	Cheryl Zegers	Pleasant Grove	\$0.00	0%	\$0.00	0%	\$0.00	0%	\$0.00	0%
06650	John Longmire	Quarryville: Memorial	\$5,891.13	30%	\$2,611.04	30%	\$948.00	30%	\$13,097.67	25%
06660	R. B. Deibler	Quarryville: Wesley	\$3,145.93	26%	\$1,040.80	40%	\$969.20	40%	\$6,101.93	33%
06670	Sandra Knaub	Rothsville: Salem	\$2,026.05	25%	\$897.99	25%	\$325.98	25%	\$7,488.13	26%
06680	George E. Miller	Safe Harbor	\$510.00	30%	\$60.00	30%	\$60.00	30%	\$1,599.38	25%
06690	Robert A. Pope	Stehman Memorial	\$700.00	20%	\$500.00	20%	\$300.00	20%	\$5,019.66	17%
06700	Timothy Duchesne	Strasburg: Wesley	\$4,383.30	30%	\$0.00	0%	\$0.00	0%	\$7,414.12	25%
06710	Nevin R. Andes	Terre Hill: St. Paul's	\$1,477.46	30%	\$654.83	30%	\$237.71	30%	\$6,791.69	25%
06715	Theodore E. McCabe	The Bridge	\$299.24	20%	\$132.62	20%	\$48.14	20%	\$2,632.47	15%
06720	Jo Ann Enders	Washington Boro	\$1,037.96	30%	\$460.04	30%	\$167.00	30%	\$1,567.41	25%
06730	C. M. Roney	West Willow	\$1,870.20	20%	\$828.90	20%	\$300.80	20%	\$7,308.53	19%
06740	Mary E. Hoskins	Willow Street: Boehm's	\$635.87	10%	\$281.83	10%	\$102.31	10%	\$7,288.51	25%
			<b>\$198,710.44</b>	<b>26%</b>	<b>\$73,994.48</b>	<b>26%</b>	<b>\$38,687.22</b>	<b>25%</b>	<b>\$502,584.56</b>	<b>22%</b>

# MISSIONS

## May 1, 2005 – Advance for Christ and His Church

### A MOMENT FOR MISSION

The prophet Isaiah—when faced with the awesomeness of God and the needs of God's people—declared "Here am I; send me!" (Isaiah 6:8) We sing lustily, "Here I am, Lord. Is it I, Lord?" (The United Methodist Hymnal, 593). Across the years, many people have responded to God's call to be missionaries in the United States and around the world. Yet some of us think we cannot respond to that call. The Advance for Christ and His Church enables each of us to "send" ourselves by giving graciously and generously to this "second-mile" opportunity. Since 1948, more than \$1 billion has been received and distributed to specific missionaries and ministries. By giving through the Advance, you can "go" to assist people who are dying of starvation or who are seeking refuge from various plights in their homelands. By giving to the Advance, you travel around the world.

After our congregation shows its support through World Service and conference benevolences (our "first-mile" giving), we can designate gifts to go to more than 2,000 Advance projects. Let us continue to support the Advance and its ministries and to hold God's people in our hearts.

### OFFERTORY PRAYER

Loving Creator and Sustainer of life, give power to your missionaries wherever they may be in whatever work they are engaged. They have chosen to follow your call: to carry your message of love and redemption for the weary, the dispossessed, the hungry and the hurting.

In this moment when we share our monetary gifts, we also commit to you our prayers, presence and service. Bless these gifts and these givers as together we help to advance your reign on earth. May these gifts truly represent our desire to go where we are needed. In Christ's name and with Christ's power, we pray. Amen.

## May 8, 2005 - World Service Fund

### A MOMENT FOR MISSION

John Wesley said: "Do all the good you can, in all the places you can, to all the people you can." This thought is also conveyed in the hymn "All Because of Jesus": "Supporting one another, doing all the good we can, in the places that need us, to all the people we can." These words state the meaning and purpose of what we United Methodists call the World Service Fund.

When we support this fund, we connect with persons in other churches, and together we assist all the people we can in all the places we can. The hymn continues: "Reaching out to help God's children, planting seeds of hope and benevolence, spreading good news of redeeming love that heals with innocence." Our offerings through World Service plant seeds for food as well as for hope. They

help to spread words and actions of God's redeeming love.

Through the personnel and resources of four denominational boards and five commissions, we are in ministry around the world. Let us repeat together aloud: "Do all the good you can, in all the places you can, to all the people you can." And we will.

### OFFERTORY PRAYER

Compassionate and loving God, this money we consecrate was not ours to begin with, for we are only trustees and stewards of your gifts. We pray that our gifts will minister with as many people as we can in as many places as we can. May our gifts reach out to those whose hearts seek you, whose bodies need your healing touch and whose spirits want to be fed. May we continue to give your money freely and generously so we can help to fulfill your mission. Help us to be faithful followers of your way and your will. Amen.

## May 15, 2005 - Peace with Justice Sunday

### A MOMENT FOR MISSION

When Ramsey MacDonald was prime minister of England, he was discussing with another country's leader the possibility of lasting peace. The other man questioned Mr. MacDonald's idealism and said, "The desire for peace doesn't necessarily ensure it." The prime minister said, "True, but neither does the desire for food satisfy your hunger, but at least it gets you started toward a restaurant."

The United Methodist Church across the years has shown a great interest in fulfilling the prophetic desires for peace with justice shown in Scripture. Our General Conference has consistently stood up for "God's demand for a faithful, just, disarmed, and secure world" (The Book of Discipline of the UMC, 2004, Paragraph 264.5).

More than half a century ago, our denomination created a World Order Sunday that subsequently became Peace with Justice Sunday. Since 1984, United Methodists have contributed to a special offering on Peace with Justice Sunday, traditionally observed the first Sunday after Pentecost. Next Sunday, we will receive that special offering to assist programs devoted to peace with justice.

### OFFERTORY PRAYER

Paul wrote to the Corinthian Christians: "Live in peace; and the God of love and peace will be with you" (2 Corinthians 13:11b, NRSV). To that God of peace and love we now give our offerings and ask God's blessings: Loving God, we acknowledge that our offerings join with other peoples' gifts. Together we minister to the physical, emotional and spiritual needs of those whose hearts are broken, whose spirits are spent and whose bodies are wracked with pain. We ask your power upon these gifts of love and sacrifice. Empower us to serve persons in our church, our community and in far-away lands. Make us mindful of them

as persons for whom Christ died and for whom peace and justice are sorely needed. In the loving and peace-filled Spirit of our Christ, we pray. Amen.

## May 22, 2005 - Peace with Justice Sunday Offering

### A MOMENT FOR MISSION

Violence and injustice are played out in a variety of ways. Often we think we can't do anything about global problems. Sometimes church people believe "social issues" should not be part of the church's agenda. The prophets of old tried to challenge people to "do justice, and to love kindness, and to walk humbly with your God" (Micah 6:8b, NRSV). They envisioned "shalom" as the time and place when "the wolf shall live with the lamb" (Isaiah 11:6). Paul announced that Jesus Christ is "our peace," who "has given us the ministry of reconciliation" (2 Corinthians 5:18).

Today's prophets also challenge us to stand against a culture that allows for or enables violence and injustice. However, Search Institute recently discovered in a study that 75 percent of United Methodist adults rarely or never work actively toward social justice. Throughout the survey, United Methodists showed low ratings for involvement and interest in social justice issues.

Today is Peace with Justice Sunday in The United Methodist Church. This is an opportunity to give money to support programs and ministries of reconciliation and shalom. Please give generously to assist this life-changing cause in our church.

### OFFERTORY PRAYER

Friends, look around and see the building that houses our congregation for worship and study. Look around and see others who have committed themselves to be a part of this community of faith. In your mind's eye, think of those whose needs we can meet through our regular offering and through the special offering for Peace with Justice.

O God, we give our gifts today so the work of your church around the world will continue to be a beacon of light and hope. May our gifts reflect our desire to be ministers of reconciliation and agents of love in a world that so desperately needs both. Bless this money and the purposes for which it is intended. Through Christ's discipleship we give and act. Amen.

## May 29, 2005 - Ministerial Education Fund

### A MOMENT FOR MISSION

A young man in Chile. An older woman in Arkansas. A former nurse in Delaware. A new college graduate from Florida. Who are they? They are among the thousands of persons who hear, feel and respond to God's call to enter some form of ministry within The United Methodist Church. The Rev. C. Anthony Smith Jr. shares: "I

answered God's call to ministry, but I needed help crossing the Jordan. In other words, I needed help getting through seminary so I could spread the gospel of Jesus Christ."

In 1968, the Ministerial Education Fund was established to assist persons like Mr. Smith in the process of becoming trained ministers. Between then and 2002, more than \$496 million was raised to educate servants of Jesus Christ—pastors, teachers, chaplains—as well as persons in other fields of ministry. More than 60 percent of today's clergy have been aided by the fund.

However, with the increased cost of education, decreased membership in the denomination and other priorities in local congregations, less money is available to help to underwrite seminary education. Because of this shortage, seminary graduates bring with them a large debt that could be alleviated with greater support of the Ministerial Education Fund. Our apportioned connectional giving includes the fund, and we must honor our commitment to these future leaders.

### OFFERTORY PRAYER

Loving God, in our hearts we know you love us whether we give anything or not; yet society doesn't seem to operate this way. Our logic makes us believe we must give in order to please you or to get your attention. Because of your amazing grace and love, we bring these gifts for ministry to your altar. We ask your blessing upon this church, not for any special privileges, but for special challenges and opportunities.

We thank you for the women and men whom you have called to be servants set apart for ministry. We thank them for their response and their sacrifice. We send a portion of our gifts today to help in their education. May we continue to be sensitive to their needs and their limits. Give them keen minds, dedicated spirits and openness to your Spirit. Give all of us the desire to follow those whom you have called to be leaders of your church. Amen.

## From the Offering Plate to Where?

Of each dollar contributed, on average 86.5 cents stays in your local church for ministries and expenses. Approximately 4 cents goes to United Methodist churchwide missions, salaries and administrative costs. The remaining 12.8 cents goes for regional ministries in your annual conference and jurisdiction. Your church finance committee recommends the budget for local mission projects, operating expenses and salaries. That budget is approved annually by your church council.

Delegates from every church in your region establish the budget for your annual conference. United Methodism's top law-making body—General Conference—sets a churchwide budget and a formula for apportioning fair-share amounts to be raised by each annual conference. Each annual conference combines that fair-share goal with their conference and jurisdictional financial needs. The annual conference establishes a formula by which the total apportionment is divided among districts and parishes in your region

## Around the World

# United Methodist tsunami response exceeds \$32 million

By Linda Beher

United Methodists contributed \$32.4 million to their Church's emergency fund that is providing relief and rehabilitation in the wake of devastating South Asia tsunamis late last year.

The tally is as of the end of March, Roland Fernandes, general treasurer of the General Board of Global Ministries, told directors of the agency, meeting here. It is the largest amount ever received by the United Methodist Committee on Relief (UMCOR) following a disaster.

UMCOR, the humanitarian unit of the global mission organization, detailed a \$19.2 million long-term development package for Indonesia and Sri Lanka. Projects are also underway in India and Somalia.

The UMCOR board approved the proposals on April 12 at its semi-annual meeting. The agency had already released emergency aid to the areas stricken by the Dec. 26, 2004, earthquake and tsunami.

"UMCOR gives thanks to God for the outpouring of care and concern offered by United Methodists in response to the incomprehensible loss and destruction caused by the tsunami in South Asia," said Bishop Edward W. Paup, president of the humanitarian agency's board of directors.

The bishop indicated that the board actions represent a snapshot of plans unfolding three months after the multi-centered, major disaster. UMCOR officials said they will travel to India and Indonesia later this month to meet with local partners. Additional projects will emerge from those conversations, they said.

UMCOR's response in Indonesia will involve four segments. With its partner the Methodist Church in Indonesia, UMCOR has identified some 1,000 families in Sumatra Province to receive initial benefits. First year expenditures of \$5 million will provide new homes, safe water and sanitation facilities, and income generation opportunities. In addition, the agency has joined longtime partner Church World Service (CWS) in a strategic alliance for recovery projects through 2008. UMCOR will also support CWS nutritional programs, vaccinations and other health services, and trauma counseling. UMCOR's share in the collaborations will be \$3 million.

A fourth UMCOR partner in Indonesia is the International Blue Crescent (IBC). The two will build permanent and temporary housing in Lamno and Aceh provinces of Sumatra. IBC is a Muslim organization that worked with UMCOR several years ago in



Men and women work together to clear the beach of debris left by the tsunami. On the east coast of Sri Lanka, some 16 villages have already organized fishing societies using a grant from the United Methodist Committee on Relief. For the first time, said David Sadoo, UMCOR emergency services staff member working in Sri Lanka since February, women will lead some of these societies. Credit: David Sadoo/UMCOR

rebuilding of homes and schools in Turkey. After the 2003 Bam, Iran, earthquake IBC acted as UMCOR's chief implementer and provided a strategic interfaith witness on behalf of United Methodists. The investment for this segment of the Indonesia program is \$1.2 million.

In Sri Lanka, UMCOR will invest about \$8 million. In collaboration with the Methodist Church of Sri Lanka UMCOR will build houses for 1,000 families and provide fresh water and income generation programs for another 1,000. The shelter program will employ both skilled and unskilled workers.

On the east coast, some 16 villages have already organized fishing societies using an UMCOR grant. For the first time, said David Sadoo, UMCOR Emergency Services staff member on the ground in Sri Lanka since early February, women will lead some of these societies. "The church's presence in a disaster of this magnitude really makes a difference in breaking open constraints" such as women assuming leadership roles, he said. "We have all had to be more creative than usual because of the extraordinary scope of the disaster."

In both of the countries, portions of the grants will support psychological health projects.

In India UMCOR has partnered with Churches Auxiliary for Social Action and Christian Medical Society of India (CASA) to operate mobile health clinics. To support continued operations of CASA the UMCOR board approved a \$320,000 grant, to be delivered in equal installments over the next four years. UMCOR officials also plan to explore additional aid that CASA identifies on a longer term horizon of two to four years. The Methodist Church of India and UMCOR are in talks now to assess income generation projects in Madras and the Andaman Islands. UMCOR also issued an emergency grant to assist Burmese refugees living in an area of Thailand devastated by the tsunami.

UMCOR officials say they expect to be in the Indian Ocean region for years to come. "The blessing for UMCOR is the absence of time constraints on delivering a long-term program of aid and development in South Asia," said the Rev. Kristin Sachen, head of UMCOR's emergency services. She noted that the operating rules established by many other relief agencies compel them to spend all funds within a predetermined timeframe. "For that reason UMCOR has the added grace to stay until the job is done," she said. "We can cover the gaps other agencies may miss because of their speed."

Linda Beher is communications director for the United Methodist Committee on Relief

## The World in Brief

### • INTERNATIONAL

The Central Conference of Southern and Central Europe elected Patrick Streiff, 49, as bishop to succeed Heinrich Bolleter, who will retire in May. Streiff, who was elected on the second ballot, has been the pastor of congregations in Lausanne, Neuchatel, and Biel, Switzerland. He has been in charge of the Methodist Center for Theological Education in French, located in Lausanne, and is also a lecturer on modern church history at the Theological Faculty of the University of Lausanne. The central conference also includes parts of northern Africa. A director of the General Board of Higher Education and Ministry, Streiff has been involved in developing a variety of French-language resources.

### • AFRICA

The board of directors of UM-related Africa University has made school history by appointing women as two of its four new academic deans. All four appointees came from within the university, and naming female deans is a first for the 13-year-old institution. Meeting April 5-7, the directors appointed Thokozile Chitepo and Beauty Maenzanise as deans of the faculty of humanities and social sciences and the faculty of theology, respectively. Both women are Zimbabweans. Also named as deans were Fanuel Tagwira, agriculture and natural resources, and Jean-Gilbert

Ilunga, management and administration. - Andra Stevens, Africa University

### • CARIBBEAN

UMCOR is at work in Haiti, where nearly 30,000 have remained homeless since Tropical Storm Jeanne's thrashing, and Grenada, where Hurricane Ivan's winds destroyed 90 percent of buildings and virtually all its agriculture. The humanitarian agency anticipates leveraging United Methodist donations in applying for more funds from sources such as the United States Agency for International Development. UMCOR will team with the Committee on Development of the Methodist Church of Haiti and GRENCODA, a local organization in Grenada, to strengthen local capacity. Projects include helping to restore lost income, rehabilitate croplands, and repair homes for some 16,000 of the most vulnerable beneficiaries on the two islands. Your generous gifts and prayers will help in a meaningful way to assist in these long-term recoveries. Please give to UMCOR Advance #982410, Hurricanes 2004

### • MOZAMBIQUE

After Joaneta Tomo Come's husband died in 1991, her four children chased her out of her home because they thought she killed him using witchcraft. "They said, 'You have to go away, you killed our father,' and I haven't heard from any of them since then,"

she says. Come is one of 26 elderly women living at the United Methodist Hanhane Women's Shelter. All are there because their families accused them of witchcraft and threw them out. These "witch daughters" are cared for by the United Methodist Women's Society of Mozambique.

### • SOUTH ASIA

The United Methodist Committee on Relief is part of an ecumenical coalition that rushed emergency aid to the island of Nias, hard hit by a powerful earthquake that struck off the west coast of Indonesia on Monday, March 28. Please continue to pray for South Asia earthquake and tsunami survivors, and give generously to UMCOR Advance #274305, South Asia Emergency.

### • ZIMBABWE

"Every 30 seconds an African child dies of hunger," R. Randy Day, chief executive of the church's global mission organization, told United Methodists gathered in Stamford, Conn., for the agency's board meeting last week. UMCOR is sending emergency grants to Zimbabwe, where the bishop has asked for aid to combat hunger. Please consider a generous gift to UMCOR Advance #101250, All Africa Drought and Famine.



## What is Golden Cross?

Golden Cross is an annual gift of love from the churches of the Eastern

Pennsylvania Conference to the five United Methodist health and welfare agencies and to their clients most in need. Those organizations include Methodist Hospital, Methodist Home for Children, Cornwall Manor, Simpson Senior Services and Wesley Enhanced Living, formerly known as Evangelical Services for the Aging. Golden Cross Sunday is Mother's Day and many of you have celebrated the ministries of these organizations on that day, or chose to do so on another day.

**Where do the dollars raised go?** Most likely, to someone you know, or someone who has touched your life through the church. Many of the recipients of these benevolent care dollars, particularly in the retirement communities, are members of United Methodist churches in our conference. They may be your 3<sup>rd</sup> grade Sunday School teacher, the pastor who performed your wedding, or just someone who touched your life, bringing you closer to Jesus Christ. Individuals who faithfully served the church but have retired and suddenly find themselves in need of skilled medical or nursing care, with costs exceeding their financial ability. Or individuals who need ongoing or urgent medical

care, or children separated from their families or who are abused and neglected. Together the five organizations named above provide more than \$10 million of benevolent care annually. Our contribution through Golden Cross may seem small in comparison to the need, but every dollar makes a difference in the life of an individual in need. Giving through Golden Cross is one way to put your faith into action and help others in the name of Jesus Christ!

**What if our church isn't participating on May 8<sup>th</sup>?** If your church has not yet celebrated the ministries supported by Golden Cross, it is not too late. Bulletin inserts and other materials are still available and the fund collection runs through the end of the year. For materials please contact Cindy Hower at Cornwall Manor telephone (717) 273-2647 x8287 or via email at [chower@cornwallmanor.org](mailto:chower@cornwallmanor.org).

**Where should donations (checks, wires, appreciated property) be sent?** If your church has funds to be sent in, please send them to Eastern Pennsylvania Conference - Golden Cross, P.O. Box 820, Valley Forge, PA 19482-0820. If your church, or an individual donor, would like to wire their donation, or make a gift of **appreciated property**, please contact me for instructions. Your contribution may end up helping one of those persons who nurtured you in the faith!

*Stacy Martin is the Executive Director of Eastern Pennsylvania-Penninsula United Methodist Foundation, Tel: 800-828-9093 x247, or email: [stacy.martin@](mailto:stacy.martin@)*

## Shalom (cont pg 1)

business came to a halt and the delegation prayed and fasted for the Lord's vision of hope. The Communities of Shalom Initiative was born out of that prayer and fasting.

"Access to affordable decent housing, to a living wage, to good schools and education, to healthcare, to creative outlets - these are what makes your community livable - all these things are shalom," said the Rev. Robin Hynicka, a team member and former director of the Frankford Group Ministry, one of more than 300 communities of shalom that are located in forty-four Annual Conferences around the world.

As a model Community of Shalom, the fourteen members of the national team visited the Frankford Group Ministry, located in the working class neighborhood of Frankford and the surrounding areas in lower Northeast Philadelphia. Frankford Group Ministry, now directed by the Rev. Catherine Bowers, unites four United Methodist congregations active in ministry with their community. Some of the programs include youth leadership development through the Beacon Center at Frankford High School; helping low-income people with income tax preparation including putting money back into the hands of low-income people through the Earned Income Tax Credit, thus bringing back nearly \$1 million into the community; working with the Muslim association to create community-wide celebrations of diverse cultures and faiths; and partnering with the Frankford Community Development Corporation to build affordable housing.

"In keeping with the United Methodist Igniting Ministry campaign, Communities of Shalom open doors for people to come in, but also open the doors of our churches for us to walk out into our immediate community - so we are in partnership in creating a more whole community," Hynicka said. "This makes for a more whole congregation as well."

The team reviewed established goals for Communities of Shalom, which are based on the Old Testament concept of the shalom commu-

nity from Jeremiah 29: 1, 4-7, and the New Testament concept of the kingdom of God: Renew the spirit of God in the church and the community; develop the prosperity and economy of communities; strengthen race, class and cultural relationships; improve community health care and coordination of social services.

The principles for establishing shalom in communities are based on proven strategies: shalom witnesses to the transforming power of God through community action; shalom focuses on church and community strengths rather than problems; shalom works with churches, businesses, community organizations, residents, and governmental agencies; and shalom addresses the systems that create poverty as it meets basic human need.

The team, during its meeting, proposed an objective to support and strengthen existing shalom sites, empower new sites and identify a future self-sustaining strategy that will address current realities and emerging needs and issues.

The team also identified a number of issues to be addressed:

- Strengthen Shalom sites by evaluating and updating the Shalom resources which includes goals and strategies, the training program, training manuals, conference coordinator manuals, grants, summits, and re-energizing sites

- Strengthen the partnership between the general church/National Shalom Committee, the annual conferences and the local sites

- Identify and resource the staff for general oversight and administration of the Shalom Initiative, local training, conference coordinators, and the Community Investment Foundation

- Empower a financial plan that helps the Shalom movement foster greater self-sufficiency

"The Shalom movement has made great progress during the last twelve years, as well as tested different ideas for resourcing and staffing," said Bishop Schol. "It is clear that we must build on our past and identify how the Shalom movement will equip and maintain Shalom sites for the future."

For more information, contact Deanna Martinez, General Board of Global Ministries, 475 Riverside Drive, Room 1547, New York, NY; 212-870-3711; [dmartine@gbgm-umc.org](mailto:dmartine@gbgm-umc.org) <<mailto:dmartine@gbgm-umc.org>>.

18<sup>th</sup> Annual  
United Methodist  
Church Day  
with the

**Phillies**

Saturday, August 20, 2005  
7:05 pm

Phillies vs. Pittsburgh Pirates

Sponsored by Eastern PA Conference, Peninsula-Delaware Conference and Greater New Jersey Annual Conference

Up to \$5.00 for each ticket sold will benefit Conference Youth Programs.  
Contact Ross A. Brightwell, 215/643-1269; [rossbrightwell@worldnet.att.net](mailto:rossbrightwell@worldnet.att.net) for details.

### Methodist Home for Children Benefits from Golden Cross!

Generous support from congregations provides care for 3,000 children, individuals and families through outreach to those who are victims of abuse and neglect, poverty and violence in rural and urban areas

As the child advocacy provider of the Health & Welfare Ministries of the Eastern Pennsylvania Conference

We ask you to please give generously to the Golden Cross Appeal

Call 215-877-1926 x 109 today to request your supplies for Golden Cross



Methodist Home  
for Children

4300 Monument Road  
Philadelphia, PA 19131-1616  
[www.methodistservices.org](http://www.methodistservices.org)

The official registration and financial information for Methodist Home for Children may be obtained from the Pennsylvania Department of State by calling toll-free (within Pennsylvania) 1-800-732-0999. Registration does not imply endorsement.

### Harry Hosier Scholarship & Awards Luncheon

Preacher of the Year  
The Rev. Hebert Coe  
Pastor of St. Daniel's UMC-Chester Pa.

Hilton Hotel  
City Line Avenue  
Philadelphia, PA

The Harry Hosier Award  
Dody Matthias  
Coordinator of Human Relation EPAC  
1996-1998

Saturday, May 21, 2005

Tickets \$40.00

Seating: 11:00 a.m.

Sponsored by  
BMCR / BUMP

(Black Methodist for Church Renewal /  
Black United Methodist Preacher)  
Proceeds benefit our deserving students.

For more information contact:  
Chairperson: Rev. DeLois Johnson, 215-739-1306

Ticket information contact:  
Co-Chair: Ms. Cassandra Smalls, 215-248-2050



## Gala (cont pg 1)

people was primary. Time was devoted to examining the character of the clergy, to building clergy and spousal support systems through "Preachers' Meetings" and "Ministers' Wives" organizations.

The old Delaware Conference placed emphasis on intentional planning and focused on the theological education of the clergy and the religious education of its congregations, including its youth. Congregations were taught about the General Church and its mission and they were taught stewardship which led them to support missions, their local missions and the missions of the General Church.

The pastors and congregations of the old Delaware Conference had a sensitivity and concern for the human condition, a unique understanding of the social gospel — as though Jesus had taught them in person, as though the scriptures themselves came alive through the enactment of their faith. The old Delaware Conference was a living witness of the love of Jesus Christ, as each clergy and lay person took the responsibility to look out for the other; to care for one another; to live with dignity and integrity in the midst of the Anglo Methodist Conferences' committed sins of poverty, segregation, racism, oppression, discrimination, and hatred. All of this while the Anglo Conferences chose to live with their sins of omission and chose not to live according to God's law of justice.

The sins of accommodating racism and prejudice made the one hundred and one years of Delaware Conference history an era of shame for this Methodist denomination. However, the Delaware Conference was birthed in dignity by its African American founders even though it was born out of the sins of its white brothers and sisters, the Anglo Methodist churches. For 101 years, African American churches and Anglo churches were both called Methodists, both belonged to the same denomination, both governed by the same Book of Discipline of The Methodist Church, both preached from the same Bible, both proclaimed salvation through Jesus Christ, but the Anglo Methodist church practiced that which grieved the heart of God.

I remember the joy. I remember the pain. I was a child of the old Delaware Conference of the Methodist Church. My parents, the Rev. Commander R. Bryant and Mrs. Rose Bud Bryant along with my two sisters, Rita and Mildred, lived with pride in an era of shame for the United Methodist Church. As an African-American minister's daughter, from childhood through young adulthood, I lived through the years of non-equitable compensation for African-American clergy, the late development of a self-contributing pension plan as the only pension plan (with a pastor's yearly salary of \$1800 - \$2400 as late as 1963), no medical insurance or poor and inadequate medical insurance. I lived through outhouses and manual

water pumps. I lived through my father growing vegetables, raising livestock, hunting game and fishing, and my mother canning, preserving and curing foods so that our family would have food to eat, especially during the winter months when on any given Sunday, it was possible the churches would not have money to pay the pastor's salary. I also lived and learned that for all that we may have been lacking, there were families of the congregations who had even less. Meanwhile, Anglo pastors and their families in the Anglo Methodist conferences lived in a different world: a world with better salaries, better housing and better benefits. I know it was the spirit of the Delaware Conference that sustained the African American Methodist churches.

The spirit of joy that is within my heart for the old Delaware Conference is always bubbling inside me. This was the foundation of my spirituality. This was where I met God at a very young age. This was where my father founded St. Matthews church in Newark, New Jersey and I learned that if you plant a seed with prayer and work, God will water and grow the garden. This is where I learned the true meaning of sisterhood, brotherhood, and fellowship. This is where I learned about the meaning and holiness of worship — the worship of God in truth and in spirit. It was through the teachings of the Delaware Conference, and that of our parents, that my sisters and I learned about our obligation to the social gospel of justice and love, caring and sharing, the giving of our tithes and our offerings unto a gracious God, our Jehovah-Jireh.

To commemorate, to pay tribute, to honor the old Delaware Conference and those great leaders, visionaries, pastors and laity who lived through one hundred and one years and left us its rich heritage, an event appropriate to the occasion entitled **THE GALA will be held on Saturday, October 29, 2005 at the Wyndham Hotel, 8<sup>th</sup> & King Streets, Wilmington, DE.** African-American churches and pastors from the conferences of the old Delaware Conference geographic area (from New York City to Cape Charles, VA) along with Anglo pastors and churches are coming together in this *black tie* celebration to enjoy fellowship, to be blessed with the gospel in song, and to sit under anointed preaching.

**As we celebrate the old Delaware Conference, we shall also give thanks to God that today we are one body in Christ because 40 years ago we merged to become a new creation.** Mark your calendars and make preparation for this significant event in the life of our church. You will not want to miss it!

**"Remember ... those who spoke the word of God to you; and imitate their faith." Hebrews 13:7 NRSV**

*The Rev. Dr. Patricia Bryant Harris is district superintendent for the Salisbury District in the Peninsula-Delaware Annual Conference.*

### THE GALA DELAWARE CONFERENCE REMEMBRANCE...40 YEARS

SATURDAY  
OCTOBER 29, 2005

WYNDHAM HOTEL  
8<sup>TH</sup> & KING STREETS  
WILMINGTON, DE 19801

Honorary Chairpersons:  
Bishop Marcus Matthews  
Bishop Melvin G. Talbert

RECEPTION 4:00 PM  
DINNER PROGRAM 7:00 PM

**Keynote Speaker**  
**Bishop Violet Fisher**

EXTENDED RECEPTION 10:00 PM

\*\*\*\* BLACK TIE EVENT!! \*\*\*\*

**TICKETS:**  
**\$ 50.00 PER PERSON**  
**TABLE OF 10: \$500.00**

**COMMEMORATIVE BOOKLET &  
HOTEL INFORMATION  
AVAILABLE**

FOR INFORMATION CONTACT:  
Rev. Dr. Patricia Bryant Harris or  
Mr. James E. Harris, Co-Chairpersons; 410-219-5401;  
[delconf40@comcast.net](mailto:delconf40@comcast.net) or  
Rev. Hebert Coe 610-876-8152  
Ms. Betty Henderson 215-226-5268  
Rev. Herbert Palmer 215-236-6223  
Ms. Anne Williams 215-223-1391

May 22, 2005



**School of Christian Mission  
July 22-24**

Spiritual Growth Study is Children of the Bible; two mission studies will focus on India and Pakistan and also public education. Weekend workshop will be held at DeSales University, Center Valley, PA, just off Route 309 and south of Allentown. Cost for full registration: \$175; commuter: \$125; and children: \$50. Registration deadline is June 15. Contact Mary Ann Repsher, 164 S. Ninth Street, Bangor, PA 18013; 610-588-1084; [erlinr@enter.net](mailto:erlinr@enter.net).

## The Board of Ordained Ministry of the Eastern PA Conference premiers website

In 1 Samuel 3, we read how, late one night, the Lord called Samuel. After two more attempts, Samuel finally understood WHO it was that was calling Him, and replied "Speak, for your servant is listening."

Whether you are (in the spirit of Samuel) still discerning what God is saying to you, or have long ago come to understand what God wants of your life, the Eastern Pennsylvania Conference Board of Ordained Ministry wants to help you answer the call.

Here is a sampling of the information you will find on the BOM website:

**Board Officers, Committees,  
Candidacy Information, Candidacy Forms, Probationary Program, Elders, Deacons, Local Pastors, Continuing Education, District Committees, District Superintendents, Links**

To view the website, go to: <http://www.gbmg-umc.org/EPCBOOM>



## General Board of Higher Education and Ministry (GBHEM) website

The GBHEM website ([www.gbhem.org](http://www.gbhem.org)) operates on behalf of The United Methodist Church to provide access to information that prepares and assists those whose ministry in Christ is exercised through ordination or the diaconate. It also provides a wealth of information on behalf of the Division of Higher Education. Educational loan and scholarship information, a listing of the 123 educational institutions related to The United Methodist Church, and access to the award-winning magazine, Orientation, are only a few features found on this website.

# Classifieds

## Discipleship Associate (Youth Ministry)

SHOUT Youth Ministry of Hempfield United Methodist Church (Lancaster, PA) is searching for a Discipleship Associate. The position is salaried part-time (25 hours per week) and schedule will vary and is flexible. Primary responsibility will be to provide administrative leadership and support to SHOUT Youth Ministry and Youth Pastor so that youth can become more fully devoted disciples of Jesus Christ. Discipleship Associate will also be responsible for the oversight of volunteers, especially Small Group Leaders, who serve in various areas of the ministry, help coordinate trips/retreat and special events, and direct all

internal and external communications in SHOUT Youth Ministry. For a complete job description and more information about our church and ministry, visit our website at [www.hempfieldchurch.org](http://www.hempfieldchurch.org). Submit cover letter and resume or any questions to HUMC, Sean P. Williams, 3050 Marietta Avenue, Lancaster, PA17543 or [swilliams@hempfieldchurch.org](mailto:swilliams@hempfieldchurch.org).

## Organist/Pianist

Growing, spirit-filled, vibrant congregation in Southern Schuylkill County is seeking an organist/pianist to accompany the congregation and choir for two Sunday morning

## Discovering our divine design

When it comes to discovering your divine design, are you more comfortable following the patterns of the world, or do you dare to determine God's Plan?

The world offers a predictable, low risk, safe way of living life guaranteeing that we can maintain as much control as possible. We can handle this on our own has become a new battle cry for living.

On the contrary, God's Plan calls for a risky, passionate, mysterious calling to do something out of the ordinary, simply because we are someone; specifically, Children of God. The only way that God's Plan works is that God Works. This is faith!

The Camp & Retreat Ministry of the Eastern Pennsylvania Conference has been progressing through a time of growth and newness that features the desire to be in God's Plan! Forgetting the "patterns" of yesterday, we have forged ahead, trusting in God's leading for today.

Some of the plans have been risky; some have included passion; and surely, they all remind us of the fact that "God works in mysterious ways!" The results can be seen in new ministry opportunities; programs, buildings and personnel that have been added with God's blessing.

Ephesians 2:10 reminds us that "we are God's workmanship, created in Christ Jesus to do good works, which God prepared in advance for us to do." The plan has been done, now is the time for implementation.

At Carson-Simpson Farm God totally amazes us as He continues to grow the ministry here. Each year we see more and more campers coming to camp and more and more lives being

changed by Christ. As our summer staff grows to close to 70, we marvel at how God continues to grow relationships and friendships that last a lifetime.

Even as we look back to the divine design God placed on the heart of Alexander Simpson to bring children who need a break from the hardships of life to a place where they could enjoy God's creation, we are blessed over and over by the relationships that keep growing with the urban churches and ministries who continue to carry out Simpson's vision.

Gretna Glen consecrated the new retreat lodge in June 2004. The beautiful building will sleep 42 individuals with comfortable amenities such as a stone fireplace, large meeting space with options of living room style or theater style, kitchenette, and full bathroom and shower facilities, all accessible.

The barn and loft are nearly complete. The first floor houses the maintenance needs: storage, wood shop, paint room, and office; as well as the new Team Builders storage and office.

The loft contains much needed three separate staff apartments.

New to Gretna Glen this year is the addition of Team Builders Training providing professional team building and leadership training to church, civic and business organizations.

## Peter D. Weaver Service Fund to help homeless women

Last year, at Annual Conference, a check for \$11,000 was presented to Bishop Peter D. Weaver in his honor, for ministry at Bethlehem Haven Center, a shelter for homeless women in Pittsburgh which he co-founded.

To date the Peter D. Weaver Service Fund totals **\$15,803.64**.

The shelter anticipates using approximately 6% of those funds (about \$950) for a special need this year: transportation costs (primarily bus passes) for women in shelter. "The importance of providing transportation funds to the women in shelter cannot be understated," said Marcia Gruver, development director for Bethlehem Haven. "One of the goals of the shelter is to establish an individualized plan for the women that will help them to address the issues that led to their becoming homeless. This entails traveling to various service providers and to pursue housing opportunities, and transportation costs can make the difference between whether they are able to follow through on their plans or not."

In addition, the shelter's Emergency Shelter Grant from Housing and Urban Development (HUD) was exhausted at the end of March and The Peter D. Weaver Fund will help to offset this shortfall.

Bethlehem Haven has provided shelter to homeless women for more than 20 years. In 2000, the shelter expanded its services to include medical and dental care, mental health counseling, residential recovery, transitional housing, employment and training, and family reunification and parenting education. It created a collaborative called Fifth Avenue Commons that provides comprehensive services to homeless women and non-residential services to homeless men.

For more information on Bethlehem Haven, call 412-391-1348, or go to: [www.bethlehemhaven.org](http://www.bethlehemhaven.org) <<http://www.bethlehemhaven.org>>



Team Builders also provides services off site on your location using a variety of portable learning experiences.

Great things have been happening at Innabah as the camp has been busy with numerous maintenance improvements and new programs. Thanks to the Capital Campaign, cans for cabins, work groups, and donations, we have been able to give Innabah a much-needed facelift. Innabah also has five new cabins with our sixth one being built this summer as well as sixteen completed Eagle Scout projects during the last four years.

We are also in the process of building a new Nature Center. This new center for environmental education will be a wonderful addition to our variety of over sixty-one summer camp events ranging from Grandparents and Me camps and Challenge camps for campers with special needs to day camp and even an adult spiritual retreat. Thus, God has truly blessed Innabah in many ways.

Pocono Plateau has been pursuing God's divine design for its ministry, present and future.

Over the past few years the camp has built the Springer Center (new dining hall and camp store), added a new maintenance shop, experienced

upgrades to all of the lodges and initiated new summer camp programs. This year we're excited about new Dad & Lad camp for dads and their 8-12 year-old son; as well as Senior High Camp H2O, and Sr. High Extreme Biking: Jersey Shore. We're also looking forward to improvements at the Adventure Camp including a new bathhouse and upgrades to Adventure Lodge set to begin this summer.

Pocono Plateau is currently involved in a master plan that will guide future development. This process will address all aspects of the camp including the programs, facilities, and natural resources. When the plan is complete, Pocono Plateau will have a clear direction for the ministry's future and a plan that outlines its development.

We move forward with this reminder from Jesus, our source of power: "I am the vine; you are the branches. If any [one] remains in me and I in [them, that person] will bear much fruit; apart from me, you can do nothing. Come, Lord Jesus!"

For more information or to reach all four camps, call toll-free: 1-877-UMC-CAMP, or go to: [www.epaumc.org](http://www.epaumc.org).

**Carson-Simpson Farm:** [www.csfarm.org/](http://www.csfarm.org/)

**Gretna Glen:** [www.gretnaglen.org](http://www.gretnaglen.org)

**Innabah:** [www.innabah.org](http://www.innabah.org)

**Pocono Plateau:** [www.poconoplateau.org](http://www.poconoplateau.org)

